

Plate 4a. Section RA-RA' - Central Palomas Basin and Upper Rincon Valley: Animas Uplift to Red Hills

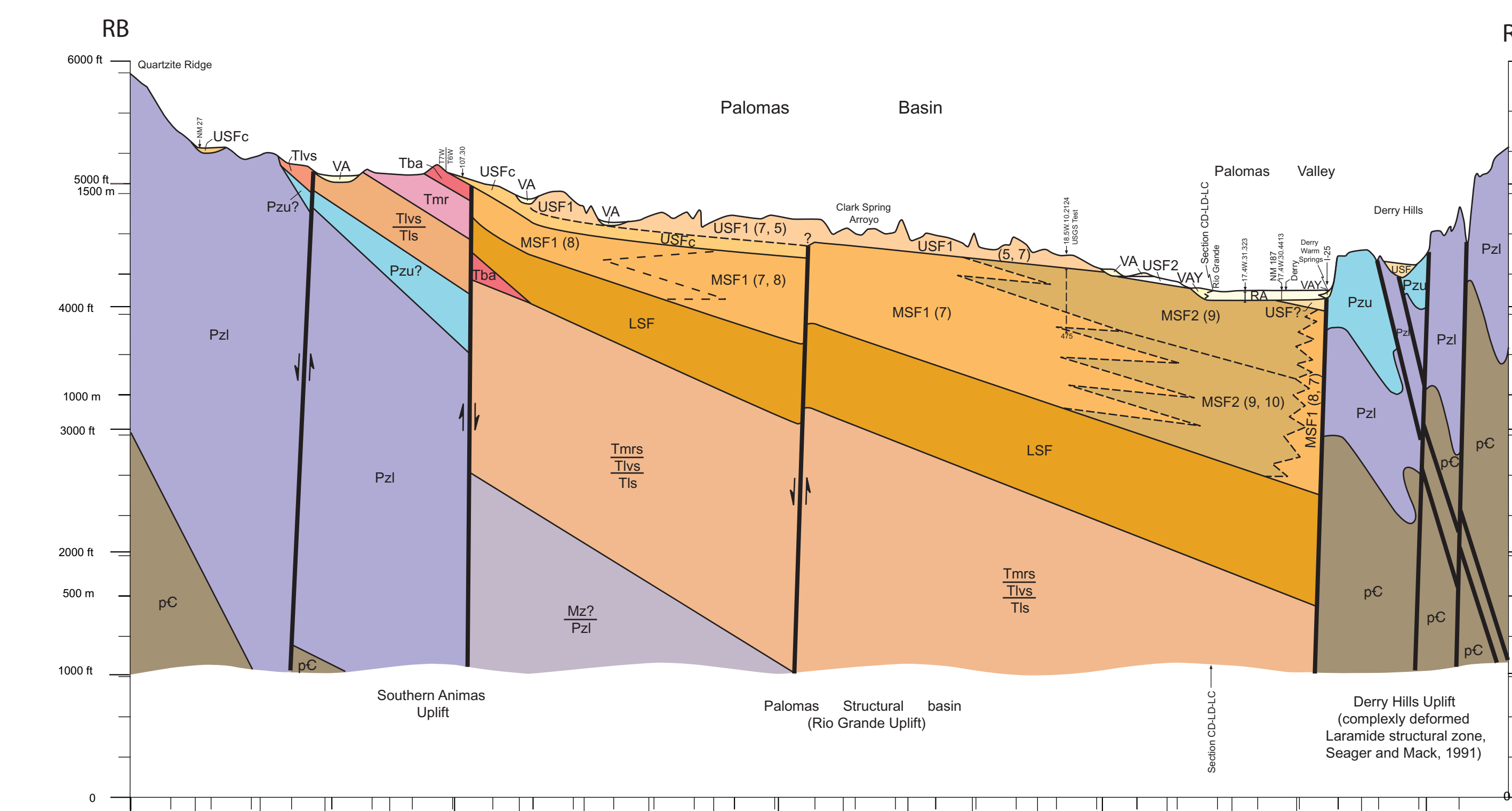


Plate 4b. Section RB-RB' - Southern Palomas Basin and Upper Rincon Valley: Southern Animas Uplift to Derry Hills

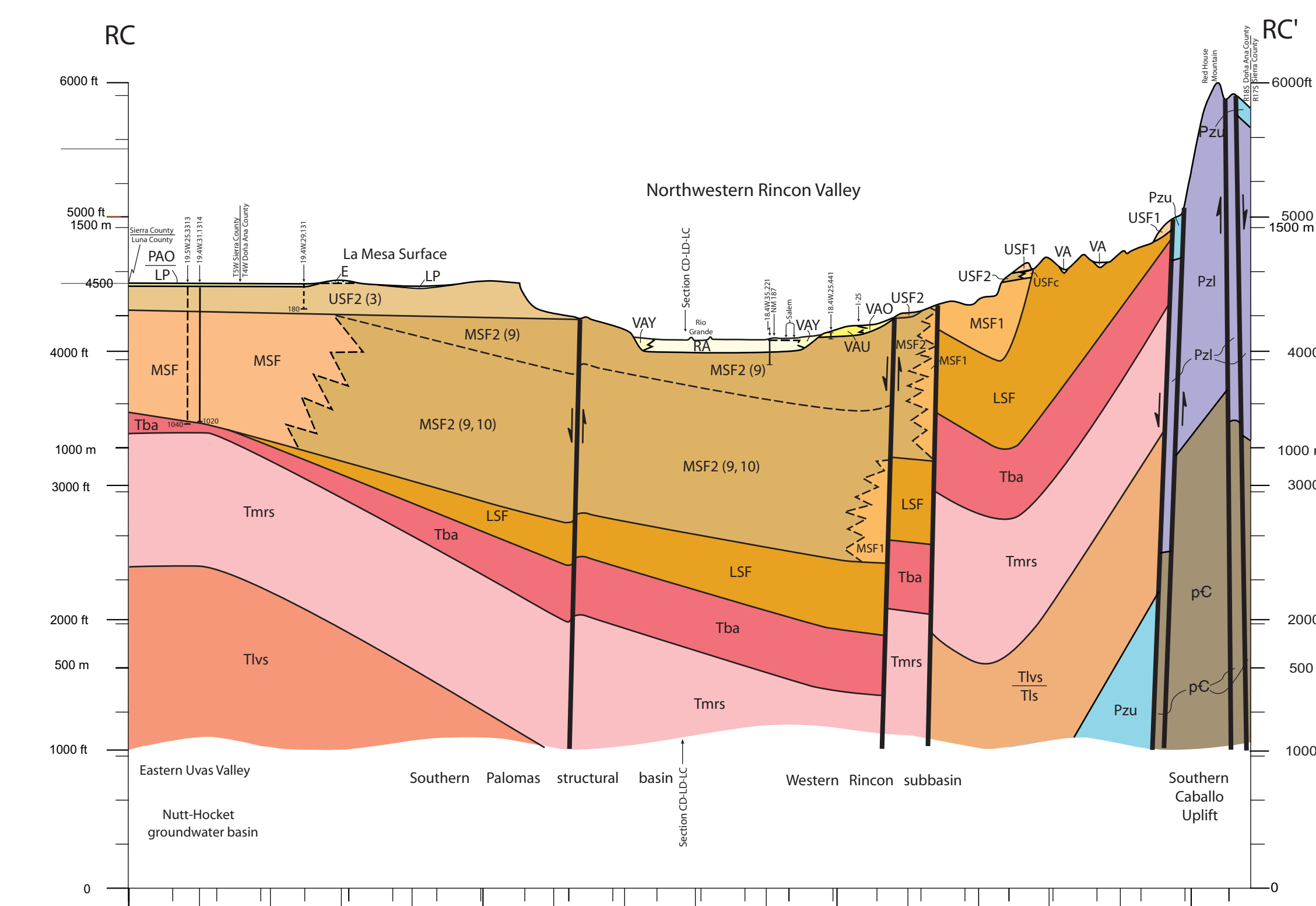


Plate 4c. Section RC-RC' - Eastern Uvas Valley and Central Rincon Valley: Uvas Valley Basin to Southern Caballo Uplift

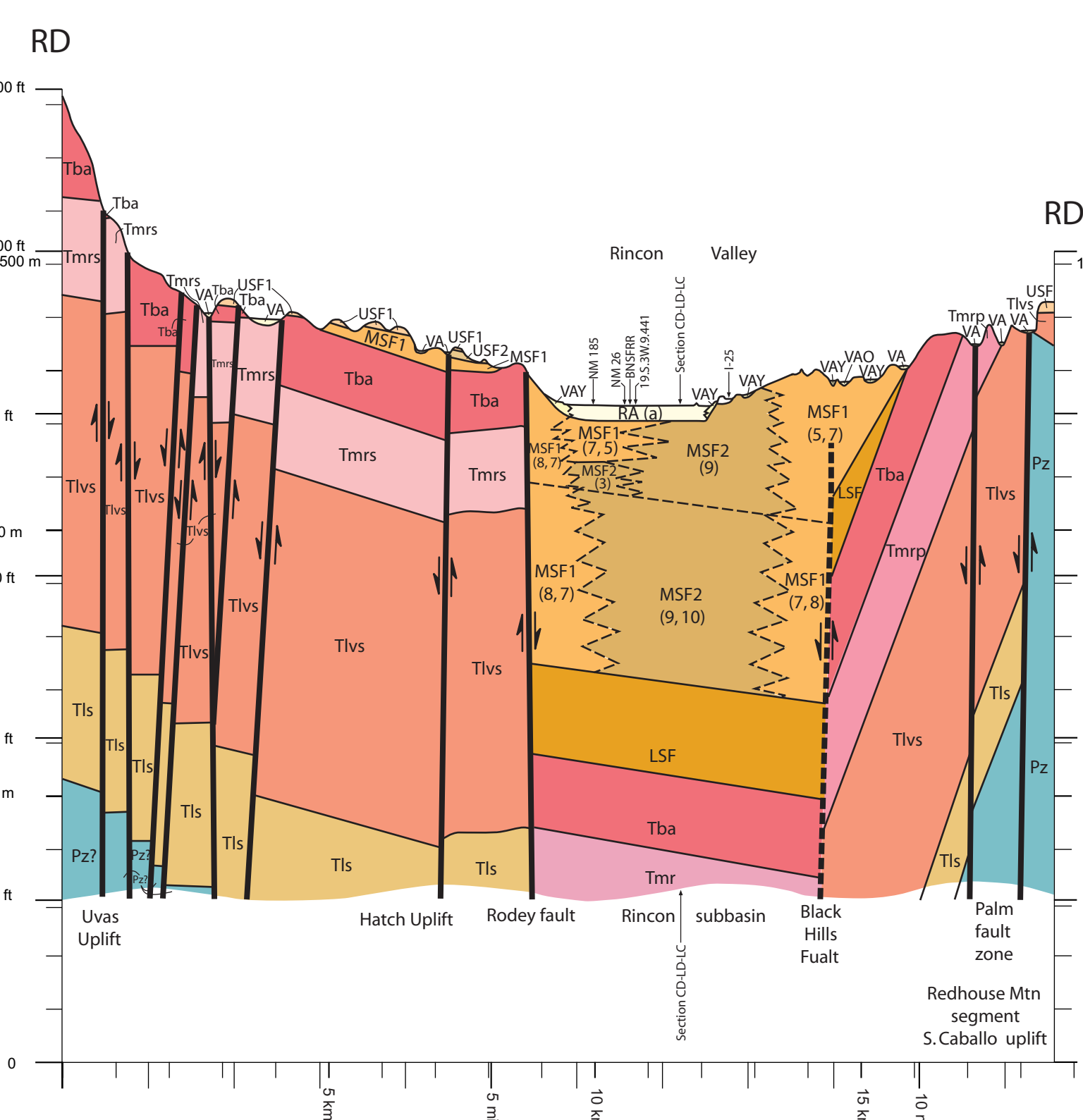


Plate 4d. Section RD-RD' - Central Rincon Valley: Uvas Uplift to Southern Caballo Uplift

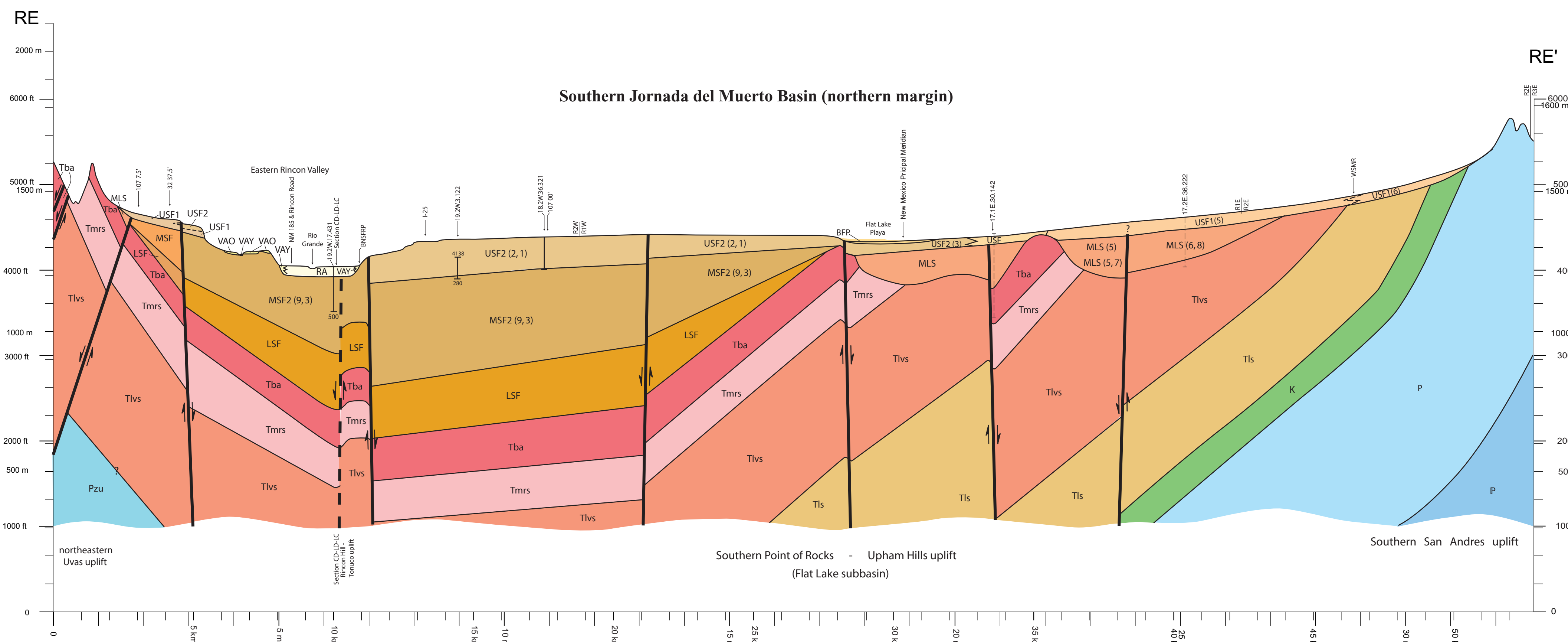


Plate 4e. Section RE-RE' - Lower Rincon Valley and southern Jornada basin: Uvas Uplift to San Andres Uplift

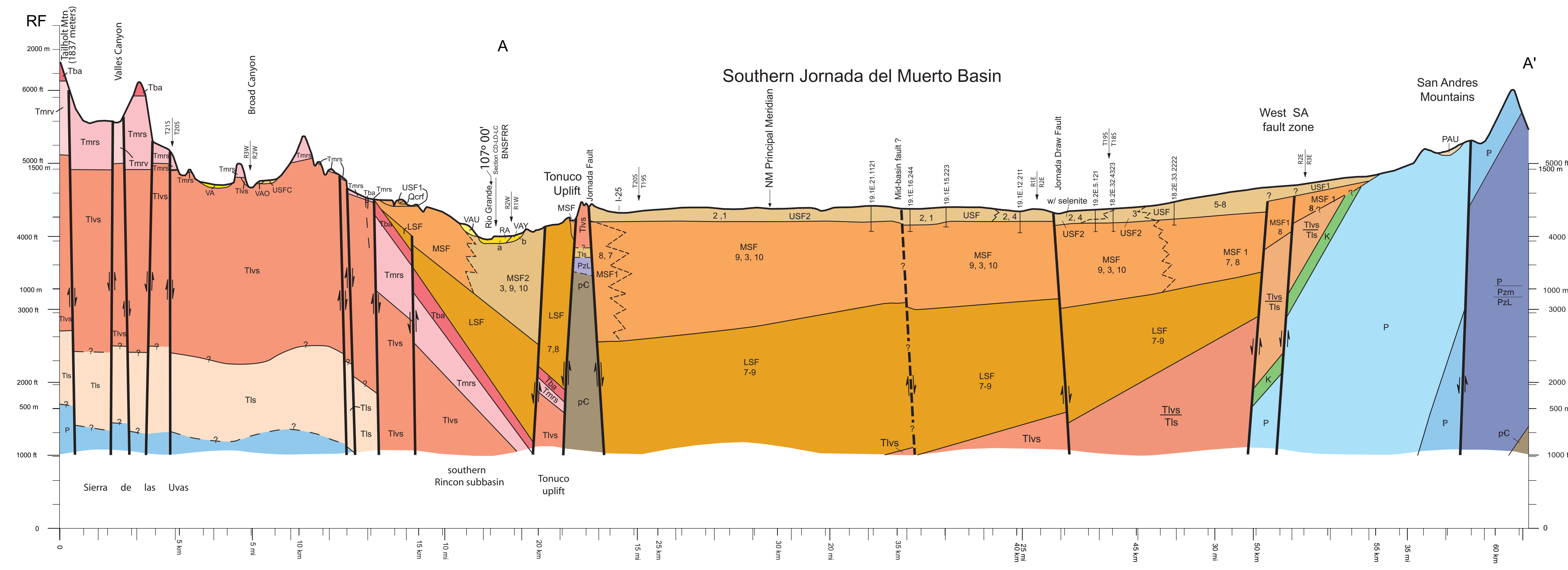


Plate 4f. Section RF-A-A' - Lower Rincon Valley, Tonuco Uplift and southern Jornada Basin: Sierra las Uvas to southern San Andres Mountains (includes Plate 3a.-Section A-A')

Plate 4. Transverse Hydrogeologic Sections across the Rincon Valley and adjacent parts of the southern Palomas and Jornada Basins between Caballo Dam and Selden Canyon

Vertical Exaggeration 10X

John W. Hawley
March, 2005