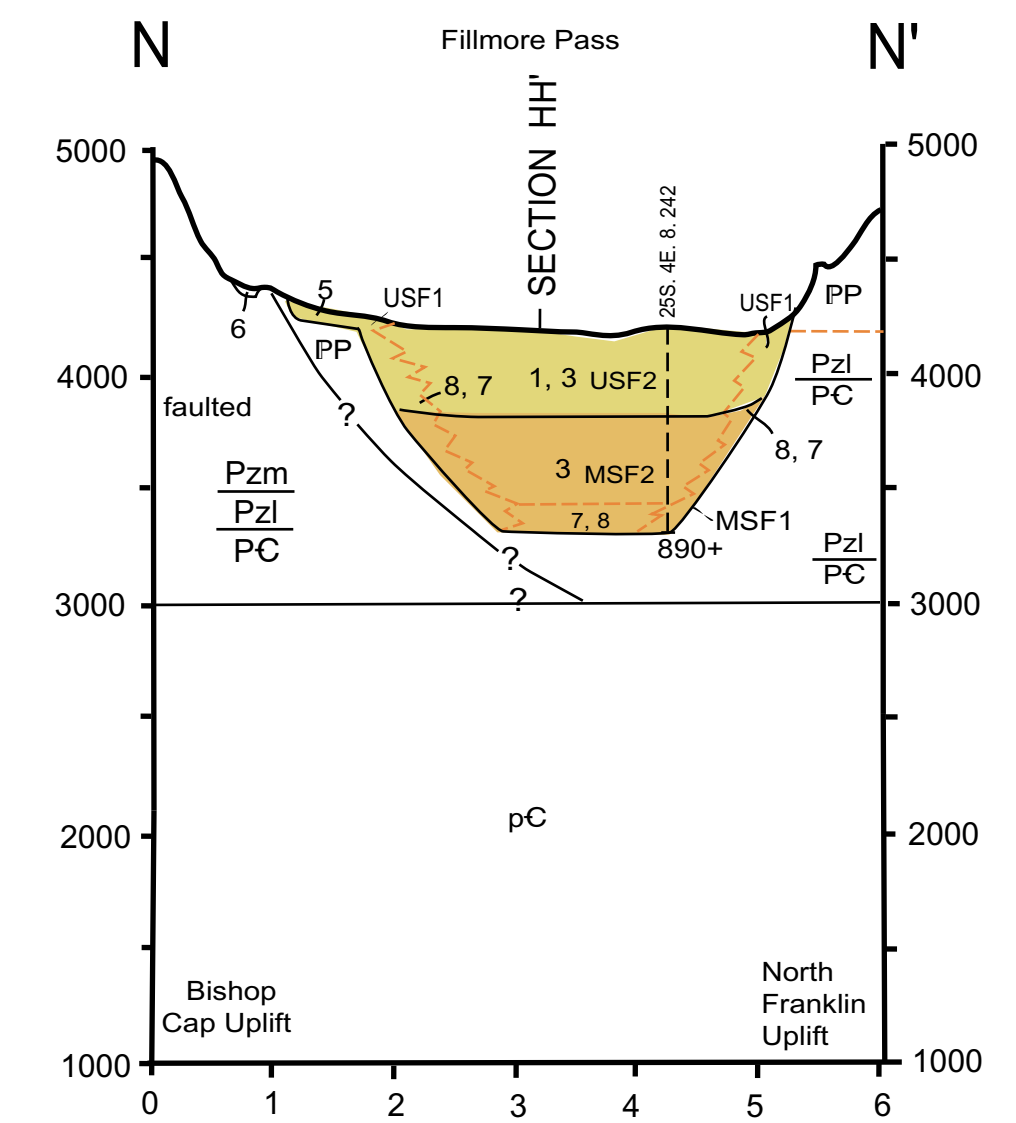
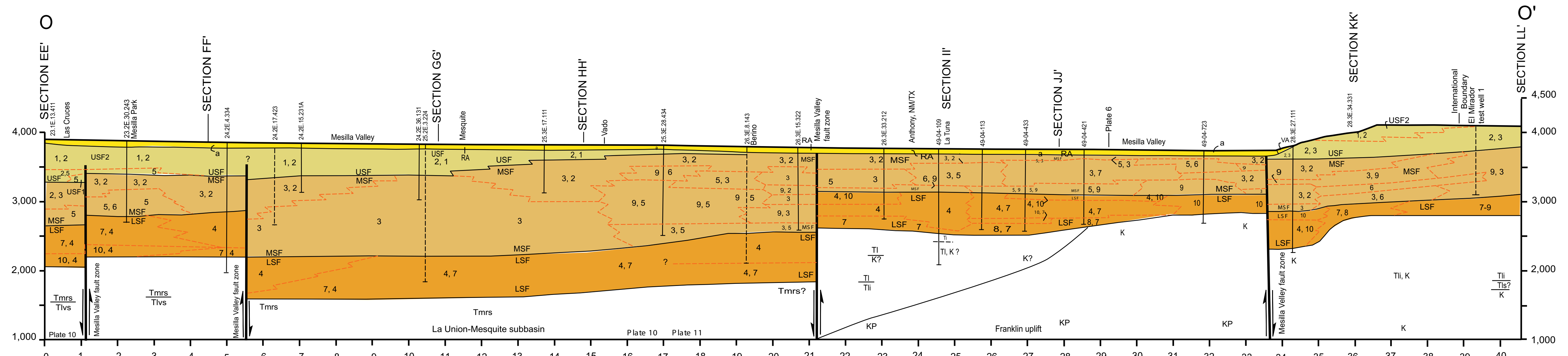


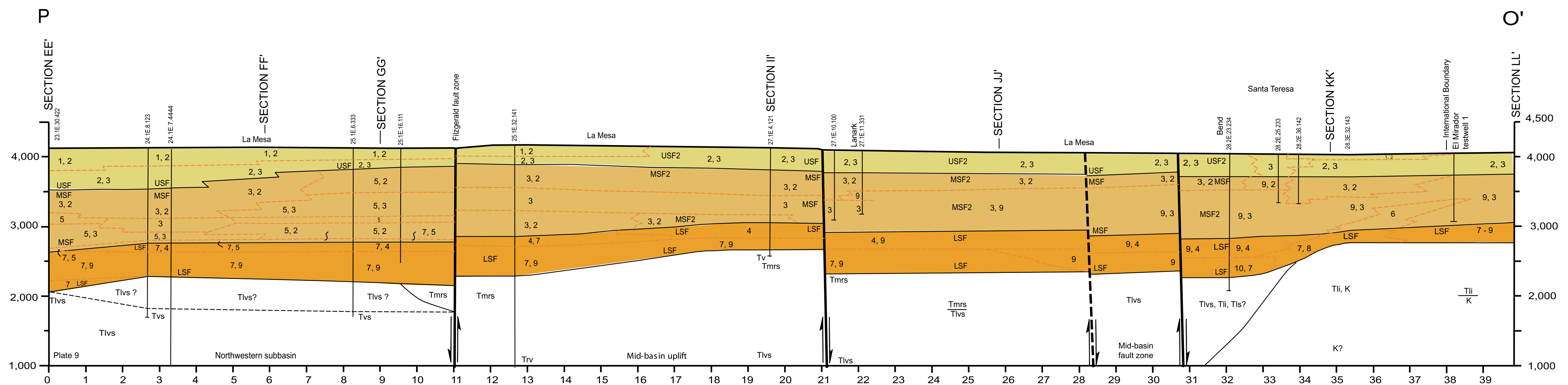
5a. Section M-M' - Eastern Mesilla Basin Border: Dona Ana Mountains to Tortugas and Bishop Cap uplifts.



5b. Section N-N' - Fillmore Pass: Bishop cap uplift to Northern Franklin Mountains.



5c. Section O-O' - Mesilla Valley Floor and southeastern Mesilla Basin: Las Cruces to International Boundary area SE of Santa Teresa.



5d. Section P-O' - West Mesa (La Mesa) area of the Mesilla Basin: US-70 near Las Cruces Airport to International Boundary area SE of Santa Teresa.

Plate 5. Longitudinal Hydrogeologic Sections along eastern border, inner Rio Grande Valley, and "West Mesa" areas of the Mesilla Basin.

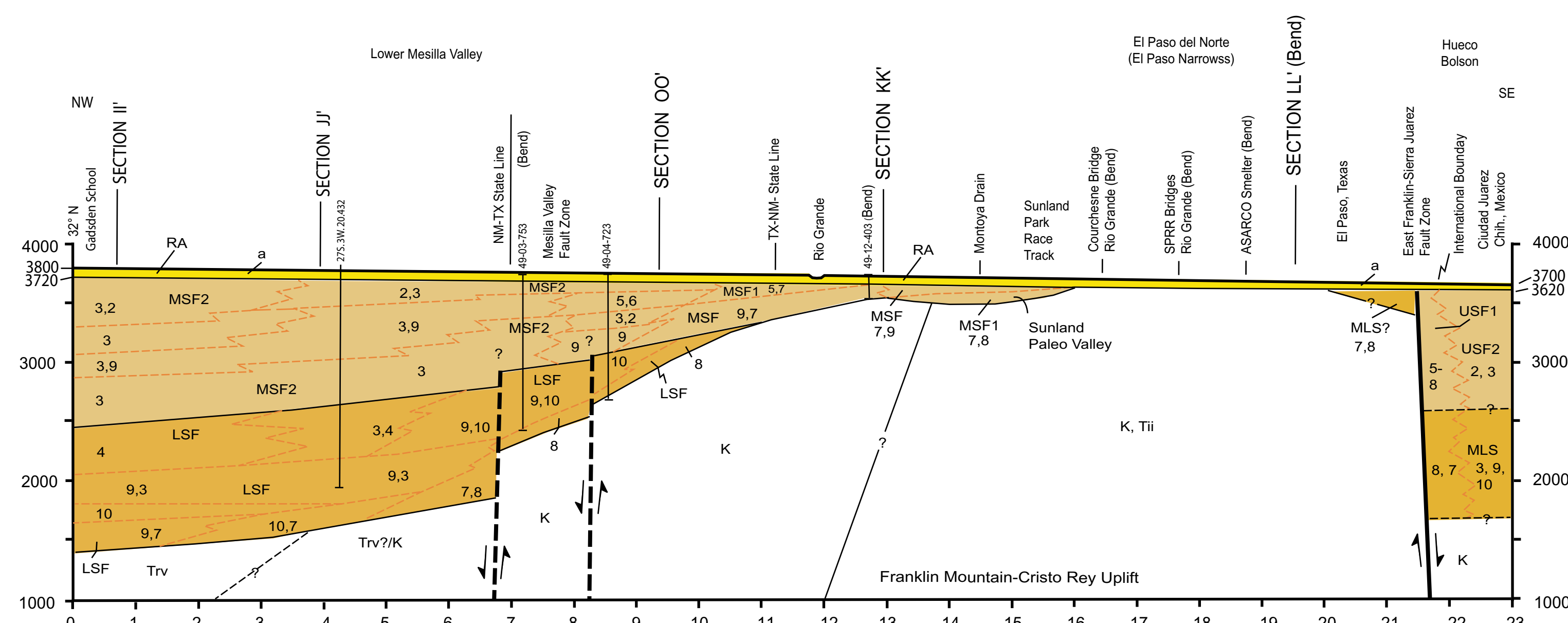


Plate 6. Hydrogeologic section of Lower Mesilla Valley and Paso del Norte reach of the Rio Grande Valley Floor, from Anthony-Gadsden area, NM to central El Paso, Texas and Ciudad Juarez, Chihuahua.