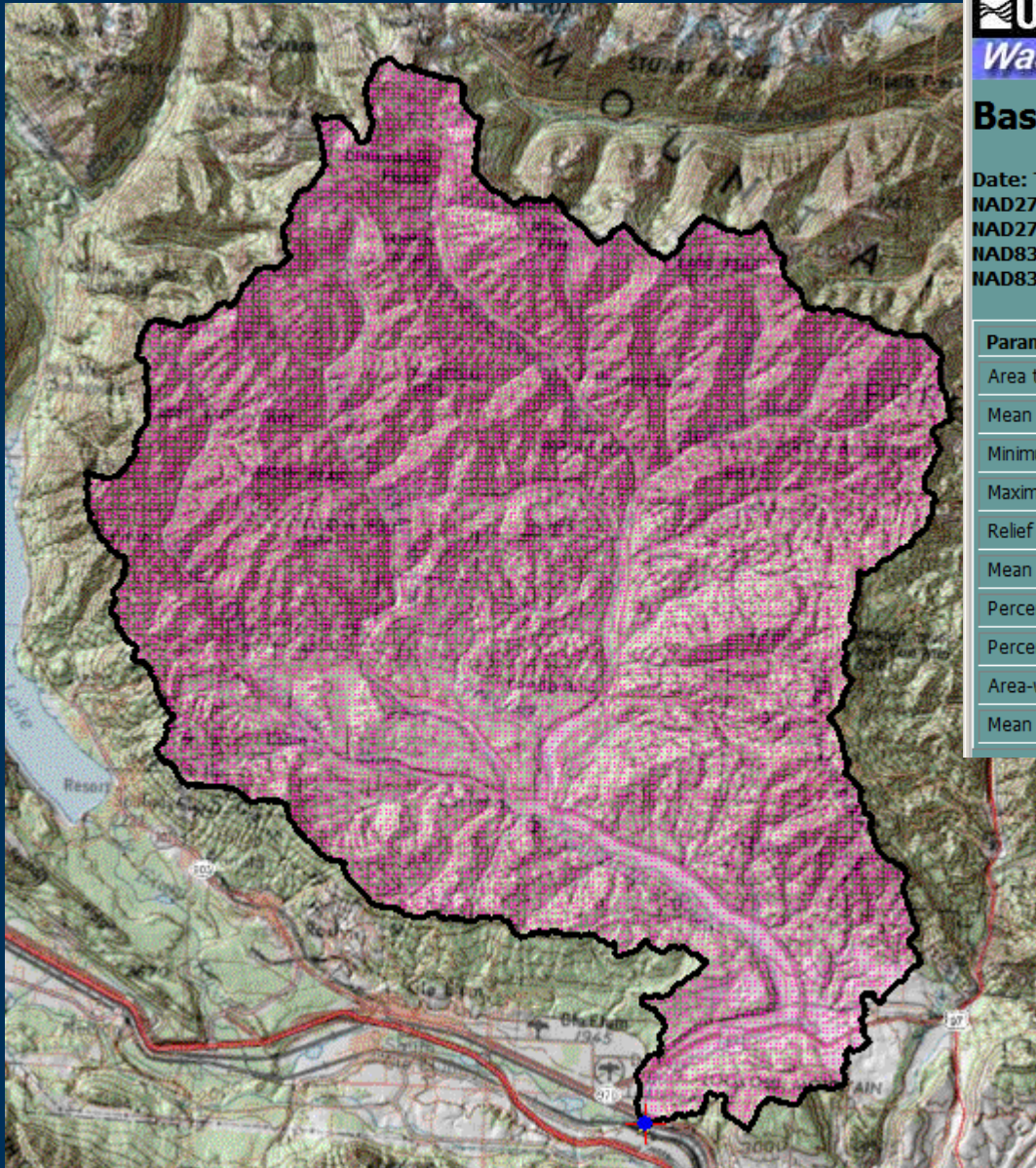


StreamStats - A Web-based Streamflow Statistics Tool for New Mexico

- Provide an interactive web-based tool to determine streamflow statistics for stream locations in New Mexico
- Use available streamflow regression equations (Waltemeyer, 2008)
- Allow users to easily obtain streamflow statistics, drainage-basin characteristics, and other information for user-selected sites on streams

Example of a StreamStats Report



Washington StreamStats

Basin Characteristics Report

Date: Thu Nov 6 2014 20:49:28 Mountain Standard Time

NAD27 Latitude: 47.1678 (47 10 04)

NAD27 Longitude: -120.8336 (-120 50 01)

NAD83 Latitude: 47.1676 (47 10 03)

NAD83 Longitude: -120.8348 (-120 50 05)

Parameter	Value
Area that drains to a point on a stream, in square miles	206.49
Mean Basin Elevation in feet	3640
Minimum Basin Elevation in feet	1810
Maximum Basin Elevation in feet	7360
Relief (maximum - minimum elevation), in feet	5540
Mean basin slope in percent	36.7
Percent of area with slope greater than 30 percent	59.5
Percent of area with slope greater than 30 percent and facing North	11.9
Area-weighted forest canopy, in percent, computed from NLCD 2001 canopy dataset	50.9
Mean annual precipitation, in inches	40.6

Peak-Flow Streamflow Statistics

Statistic	Flow (ft ³ /s)	Standard Error (percent)
PK2	1130	96
PK10	2340	63
PK25	3060	56
PK50	3660	53
PK100	4290	52