

MEET THE SPEAKERS
25TH ANNUAL NEW MEXICO WATER CONFERENCE

SESSION I

H. RALPH STUCKY was appointed as the first Director of the New Mexico Water Resources Research Institute in 1964. A native of Montana, Dr. Stucky received a Bachelor's Degree in Animal Science from the University of Idaho, a Master's Degree in Agricultural Economics, and a Doctoral Degree in Economics and Political Science from the University of Minnesota. He came to New Mexico State University in 1954 as Head of the Department of Agricultural Economics from the position of Extension Economist with Montana State University.

Dr. Stucky served as Chairman of the Annual New Mexico Water Conference from 1956 through 1971, organized and directed the New Mexico Water Resources Research Institute during its formative years, authored more than 70 publications in the water resources field, served as Director of the National Universities Council on Water Research, and received a presidential commendation for outstanding National Contributions on Water Resources. The New Mexico State University Board of Regents named the Water Resources Research Institute building "Stucky Hall."

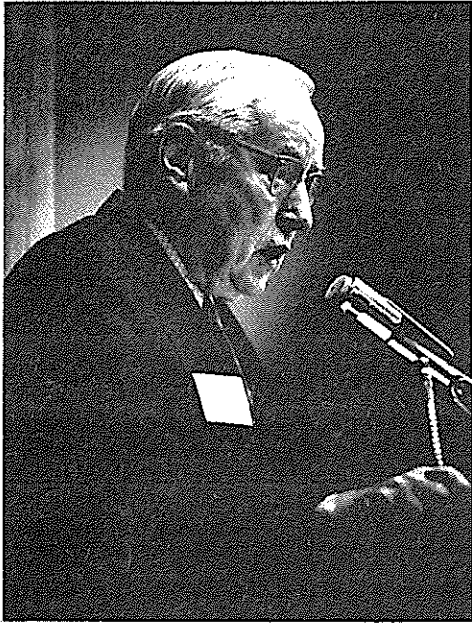
STEVE E. REYNOLDS has been the State Engineer of New Mexico since 1955. He has spoken at numerous Water Conferences, including the first one in 1956 when his topic was "The Effect of Interstate Compacts on New Mexico Water Supply." When a statewide research committee was established in 1966 to exchange information and research needs between the various agencies in New Mexico, including New Mexico Water Resources Research Institute, Reynolds was a member of the first committee.

He is the author of numerous papers in the field of water development, conservation, use and law, as well as having authored more than 20 papers in the field of thunderstorm electrification, precipitation mechanisms, and electrical effects associated with the freezing of dilute aqueous solutions. He is a graduate of the University of New Mexico, having a degree in mechanical engineering; he has also received an honorary degree of Doctor of Laws from New Mexico State University in 1977.

ELDON HANSON is Professor Emeritus of New Mexico State University. He was formerly the Head of the Department of Agricultural Engineering from 1951 to 1979. A pioneer in the field of consumptive use, Professor Hanson has been involved in numerous WRRRI research projects.

ROBERT LANSFORD is Professor of the Department of Agricultural Economics and Agricultural Business at New Mexico State University. For the past 15 years he has been either a leader or a participant in ten interdisciplinary research projects. Because of his experience, he was appointed the coordinator on four interuniversity-interdisciplinary research projects dealing with water utilization in the Rio Grande Basin and the Southern High Plains of New Mexico. Lansford is a graduate of New Mexico State University, and has his Doctoral Degree from the University of Minnesota in Agricultural Economics.

Session One: The Past 25 Years
Speakers



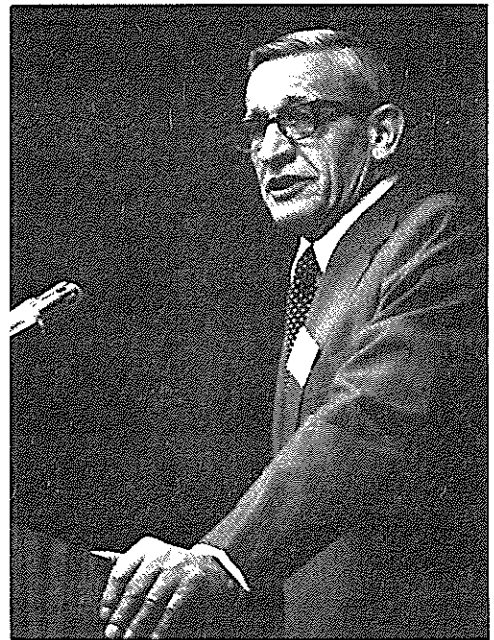
Ralph Stucky



Eldon Hanson



Robert Lansford



Steve Reynolds