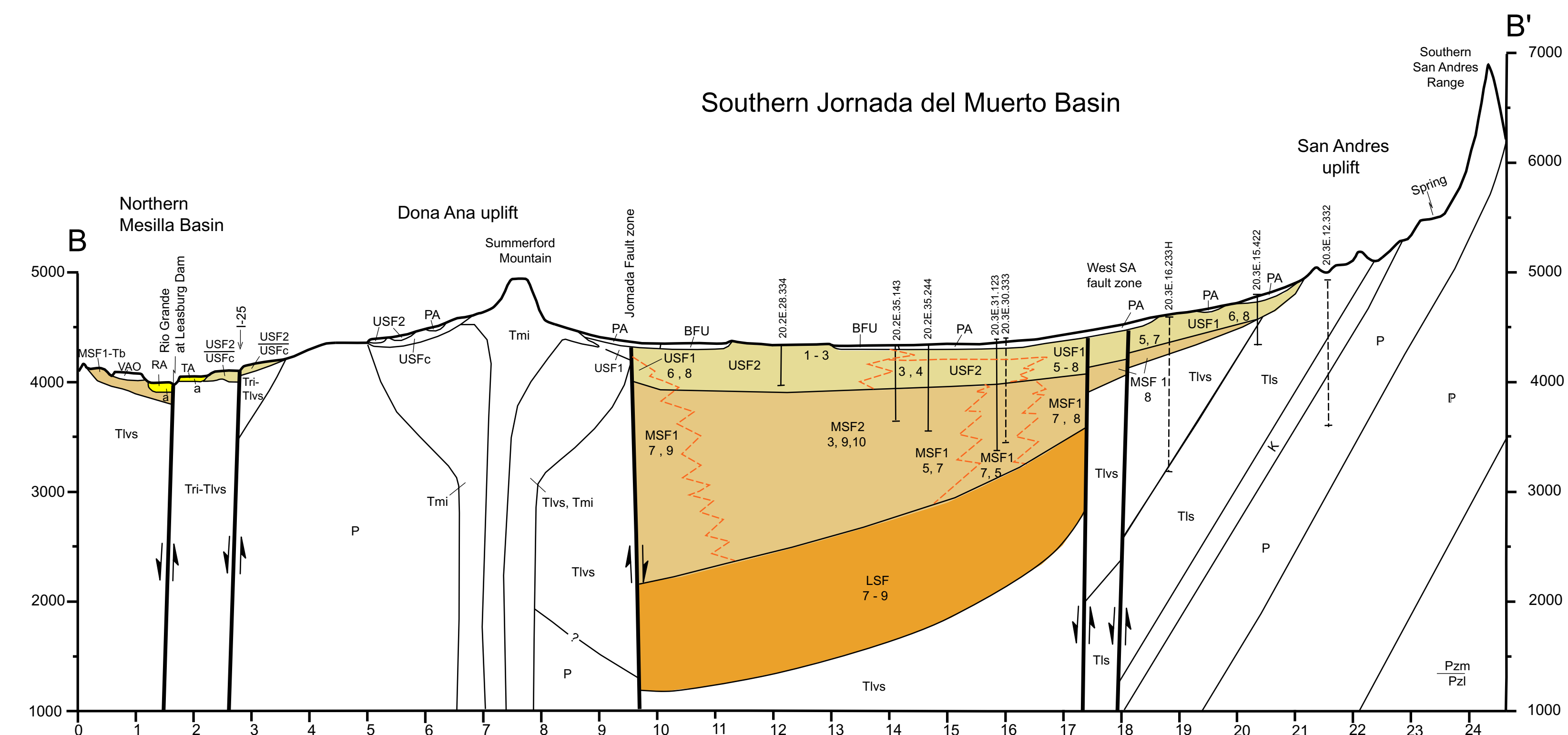
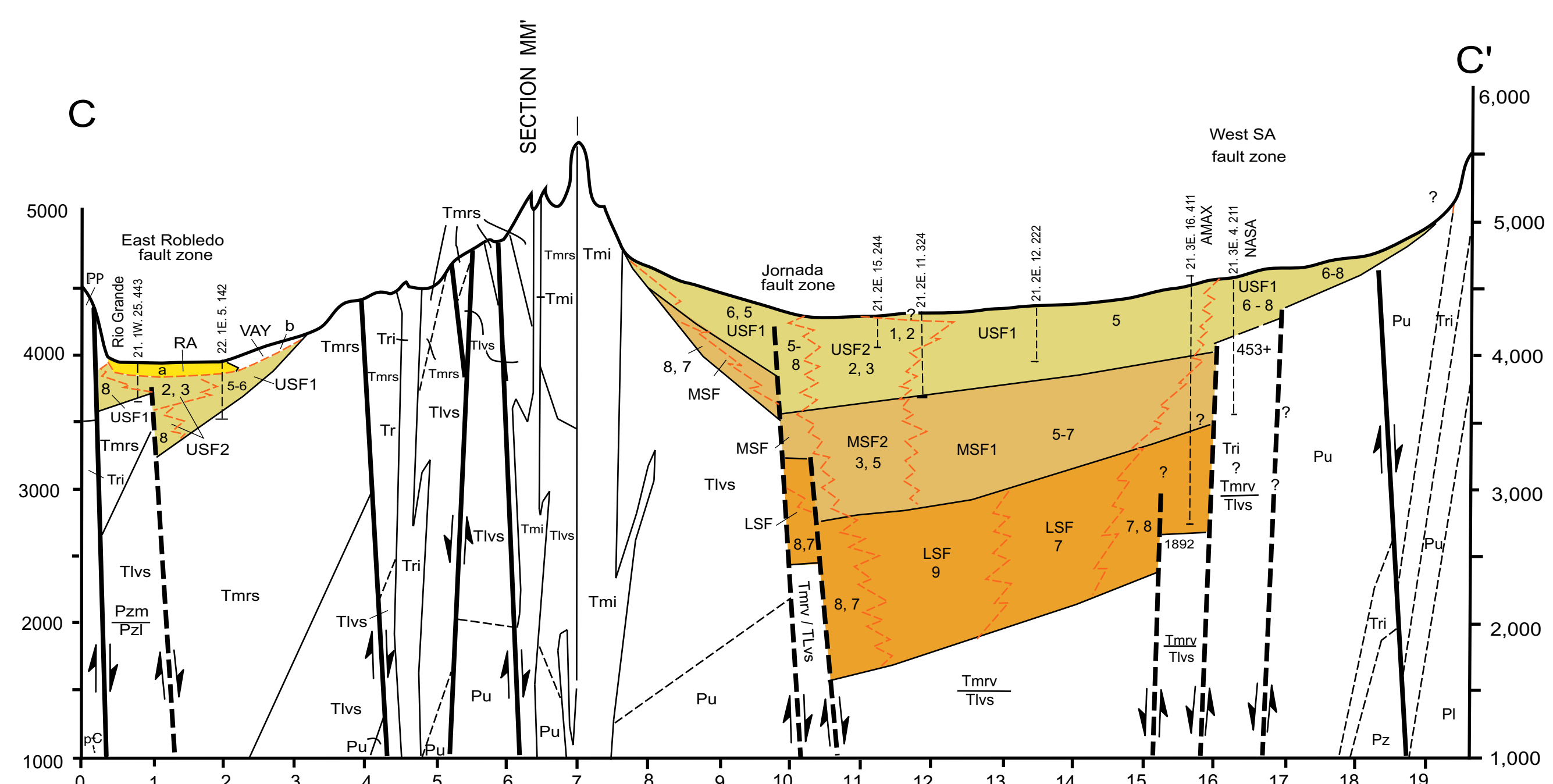


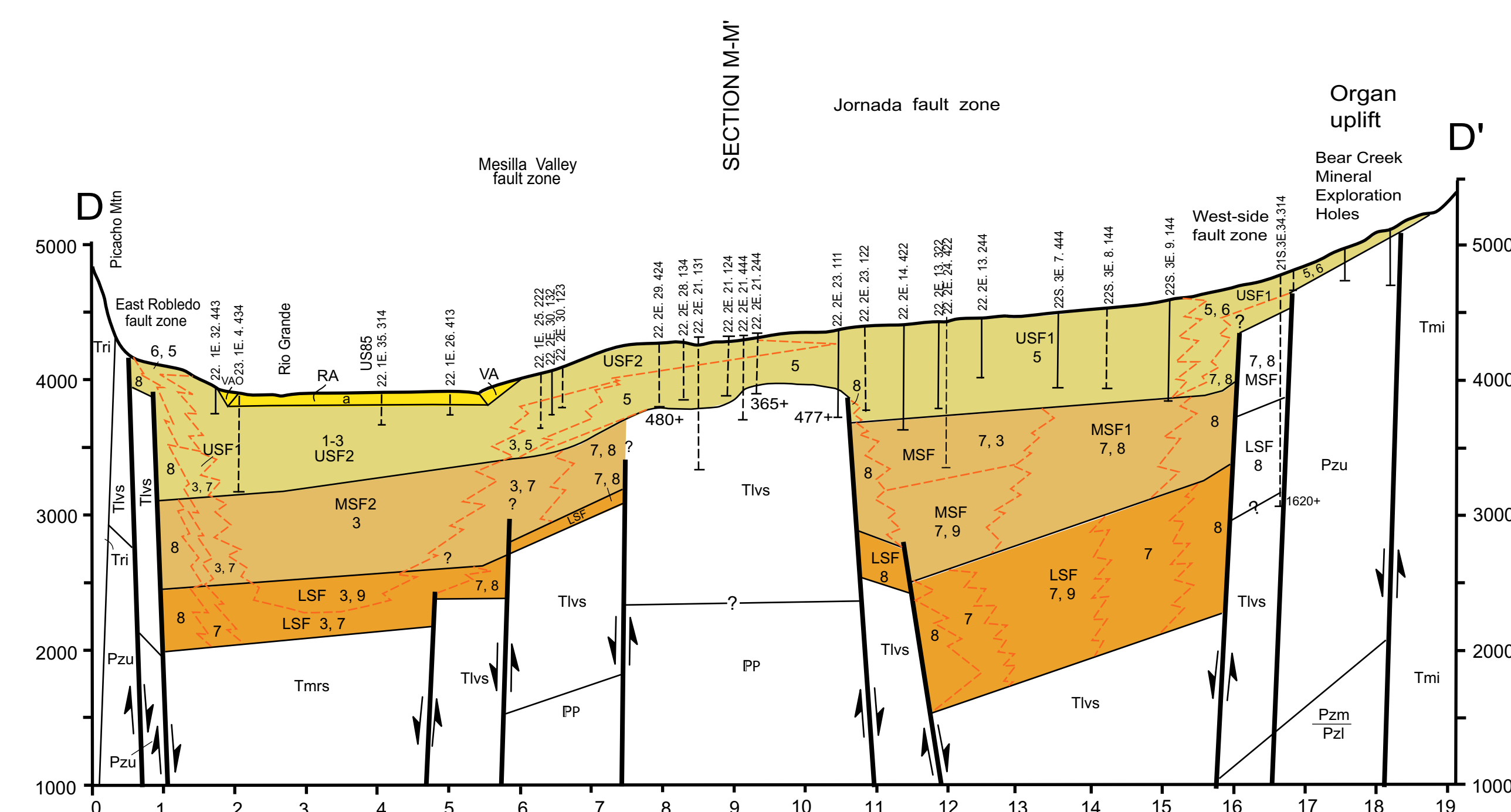
Plate 3a. Section A-A' - Jornada (del Muerto) Basin: Rincon Valley and Tonuco Uplift to San Andres Mountains



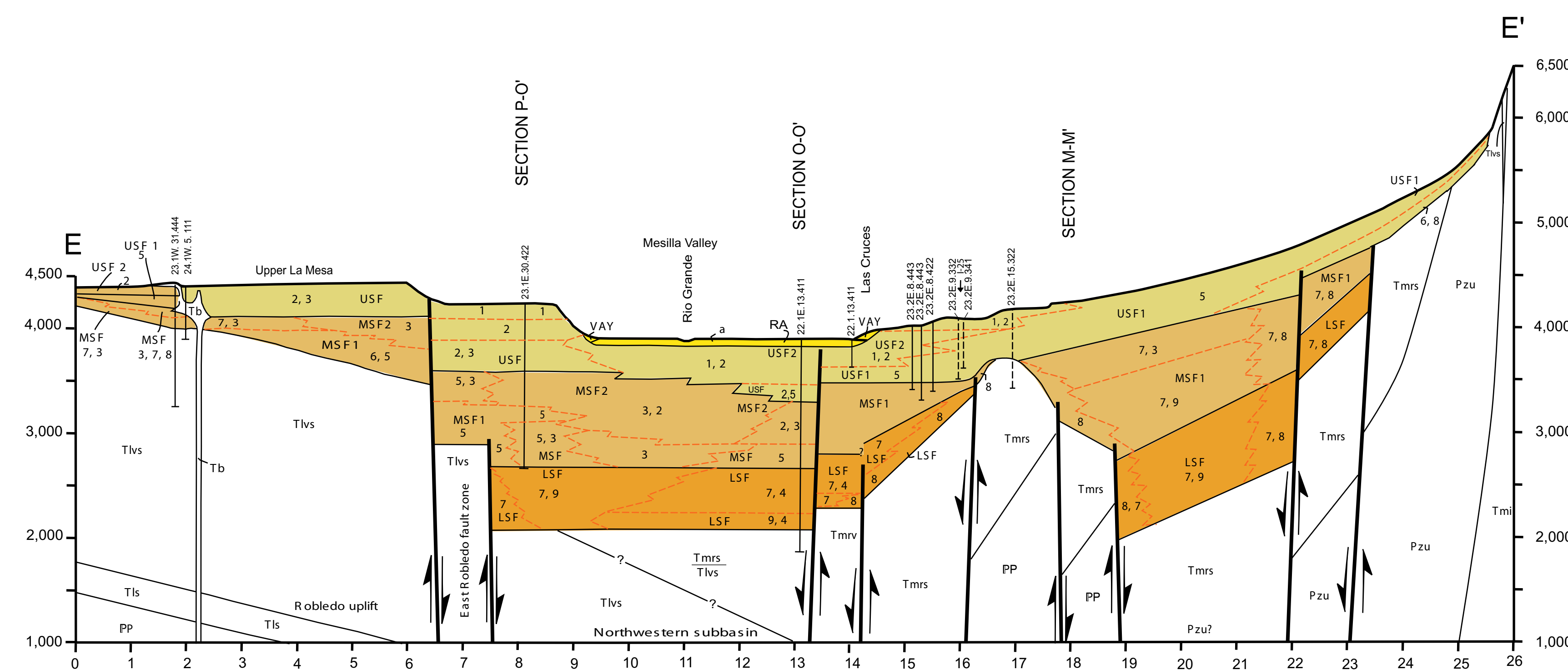
3b. Section B-B'-Northern Dona Ana Uplift and Jornada Basin: Upper Mesilla Valley at Leasburg Dam to San Andres Mountains.



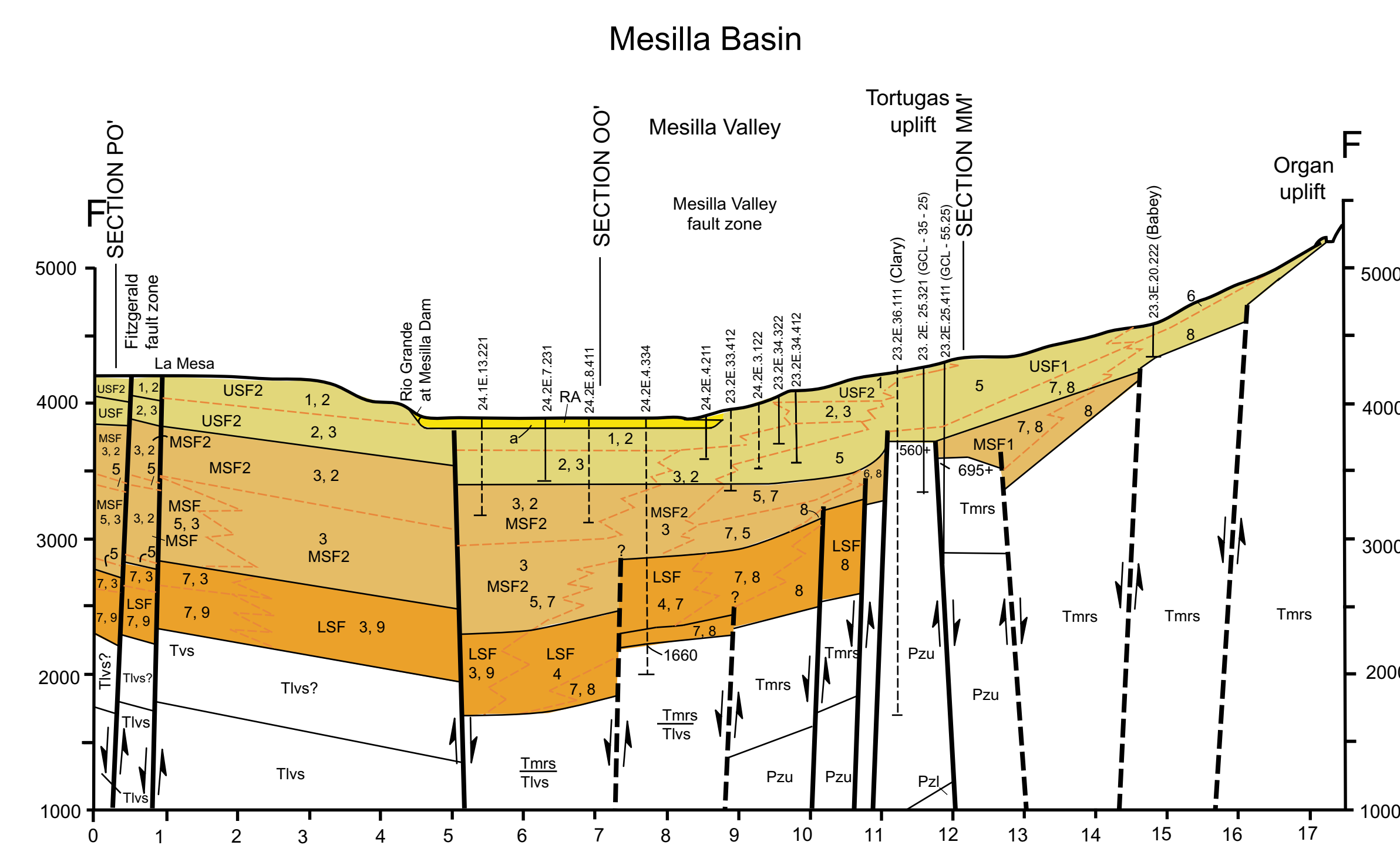
3c. Sections C-C' - Upper Mesilla Valley and Jornada Basin: Robledo and Dona Ana Uplifts to southern San Andres Mountains



3d. Section D-D' - Mesilla Valley and U.S. 70 corridor at southern end of Jornada Basin: Picacho Mountain to San Agustin Pass through Northern Organ Uplift.



3e. Section E-E' - Mesilla Valley and Northern Mesilla Basin: Las Cruces airport to Organ Mountains.



3f. Section F-F' - Mesilla Valley and Tortugas uplift: West Mesa area of Mesilla Basin to southern Organ uplift.