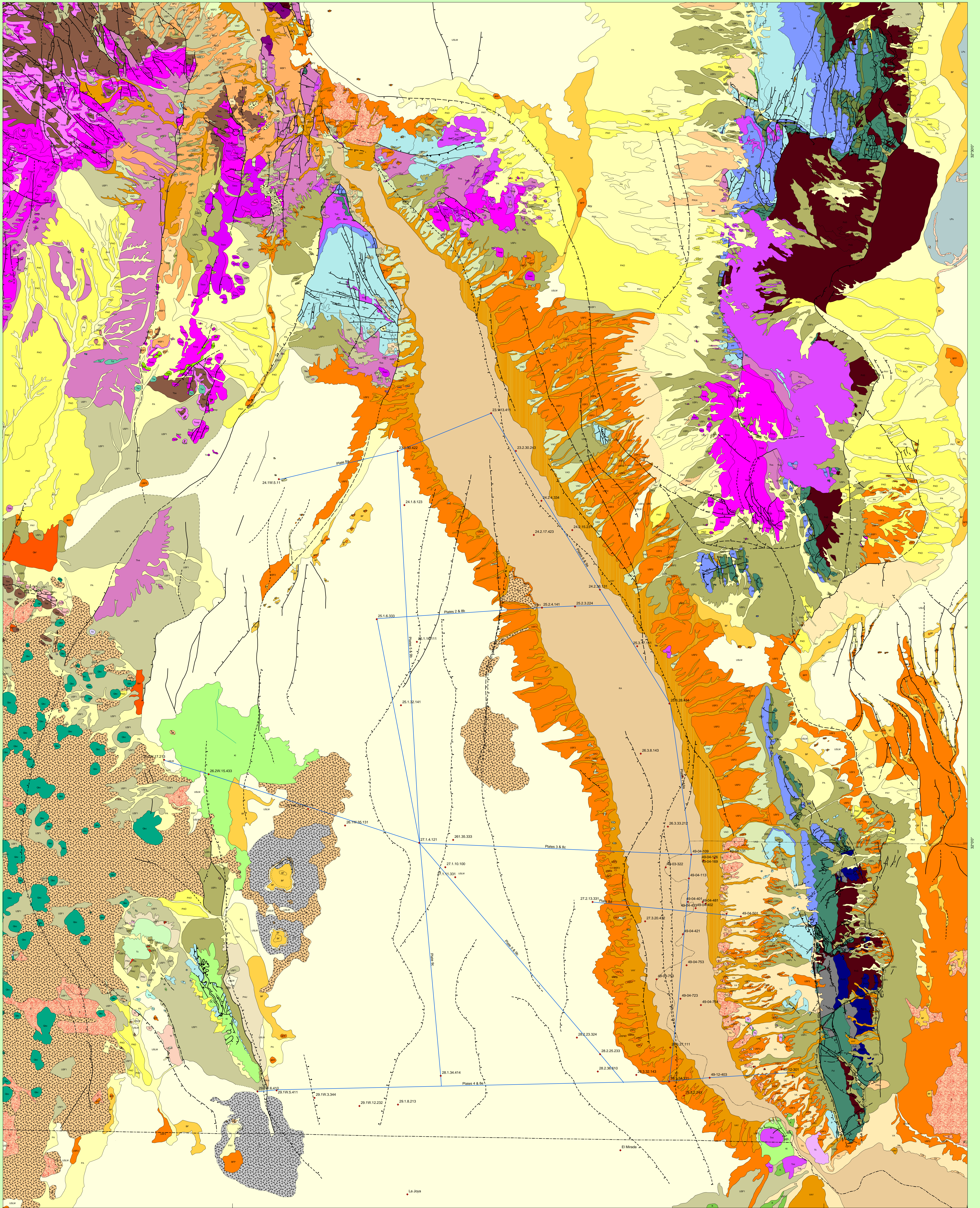
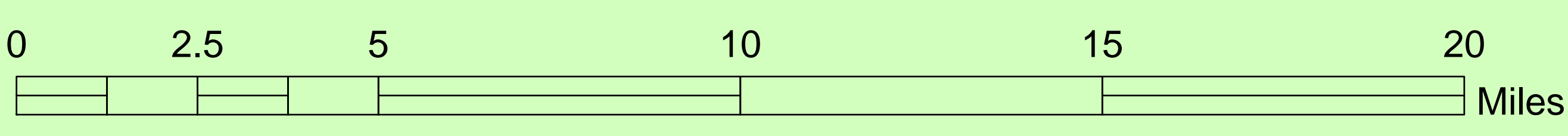


GEOLOGY OF SOUTH-CENTRAL NEW MEXICO



Legend		
STRUCTURE	—▲— approximate thrust fault	—●— landslide
—+— anticline	—○— crater	—○— line of craters
—+— approximate anticline	— — fault	— — monocline
—+— approximate normal fault	— — inferred normal fault	— — overturned syncline
—+— approximate normal fault	— — inferred normal fault	— — syncline
—+— approximate normal fault	— — inferred syncline	— — thrust fault
—+— cross-section lines		
—●— well cores		
BORDERS		
— — COUNTY	— — approximate contact	— — concealed contact
— — INTERNATIONAL	— — contact	— — inferred contact
— — STATE		



1:100,000 1 inch equals 1.578283 miles