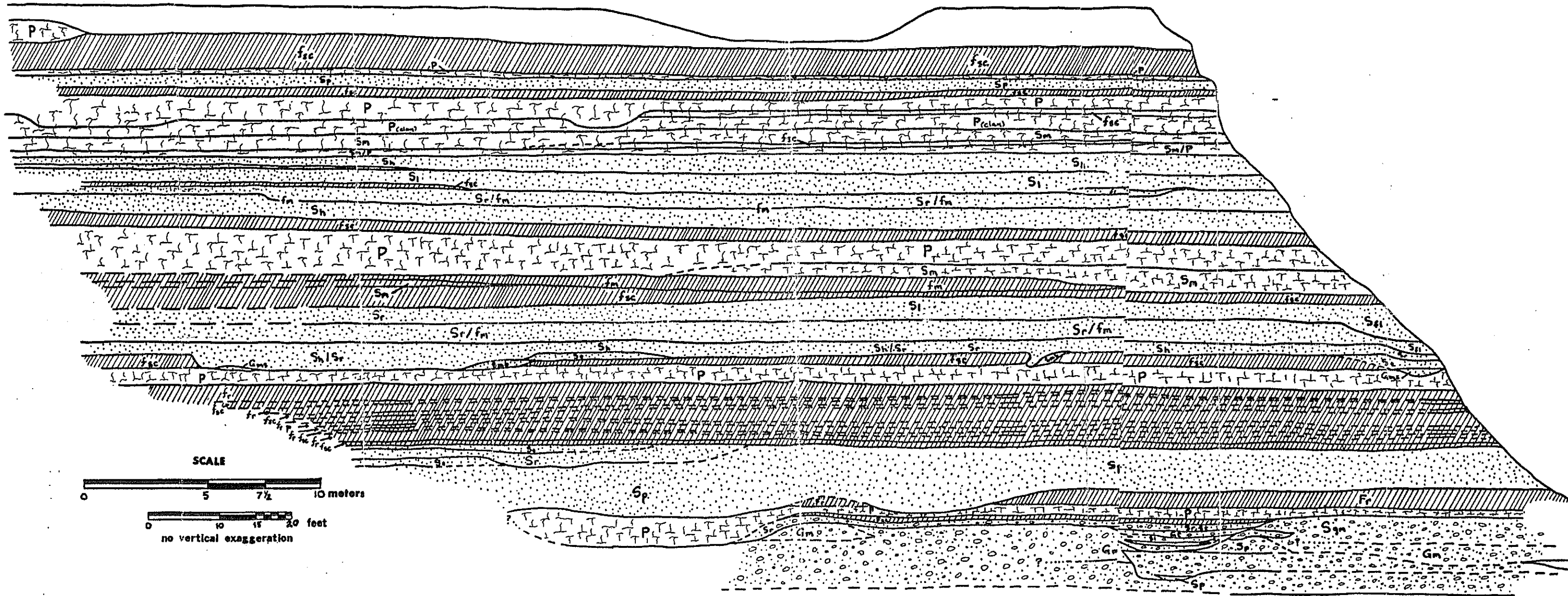


PLATE 1 Location map of measured sections and OUTCROP 1

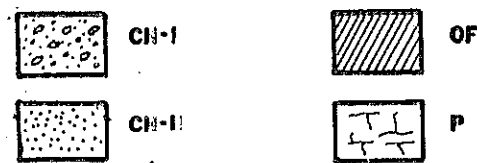
SW

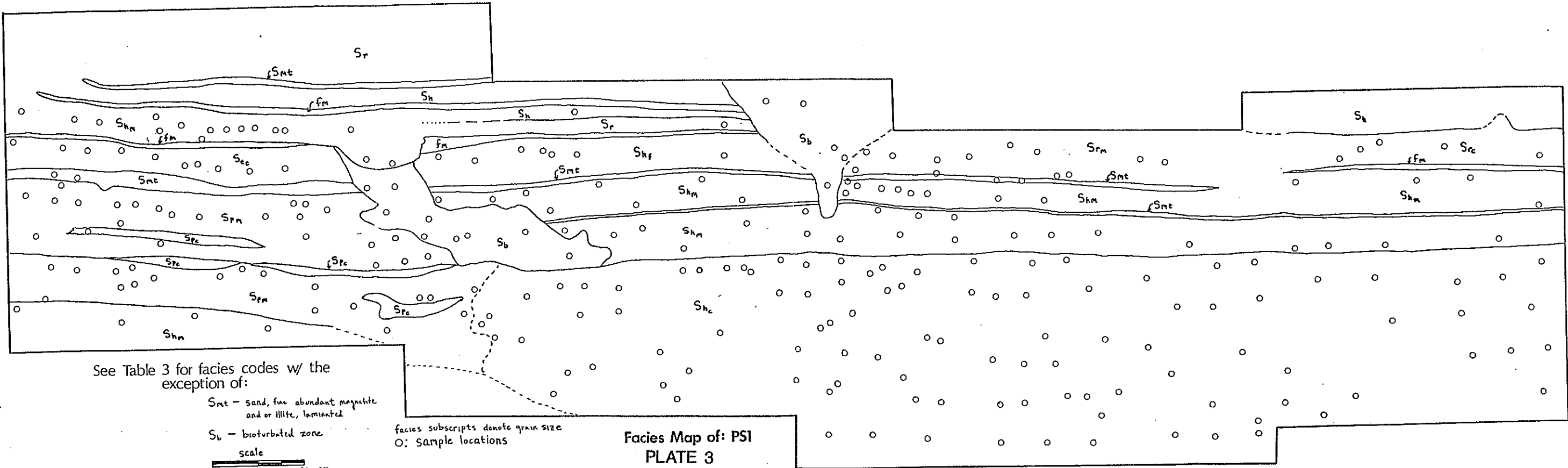
NE



Facies Map of Outcrop-1
 (see Plate 1 for location)

PLATE 2





See Table 3 for facies codes w/ the exception of:

S_{mt} - sand, fine abundant magnetite and or illite, laminated

S_b - bioturbated zone

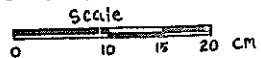


facies subscripts denote grain size
O: sample locations

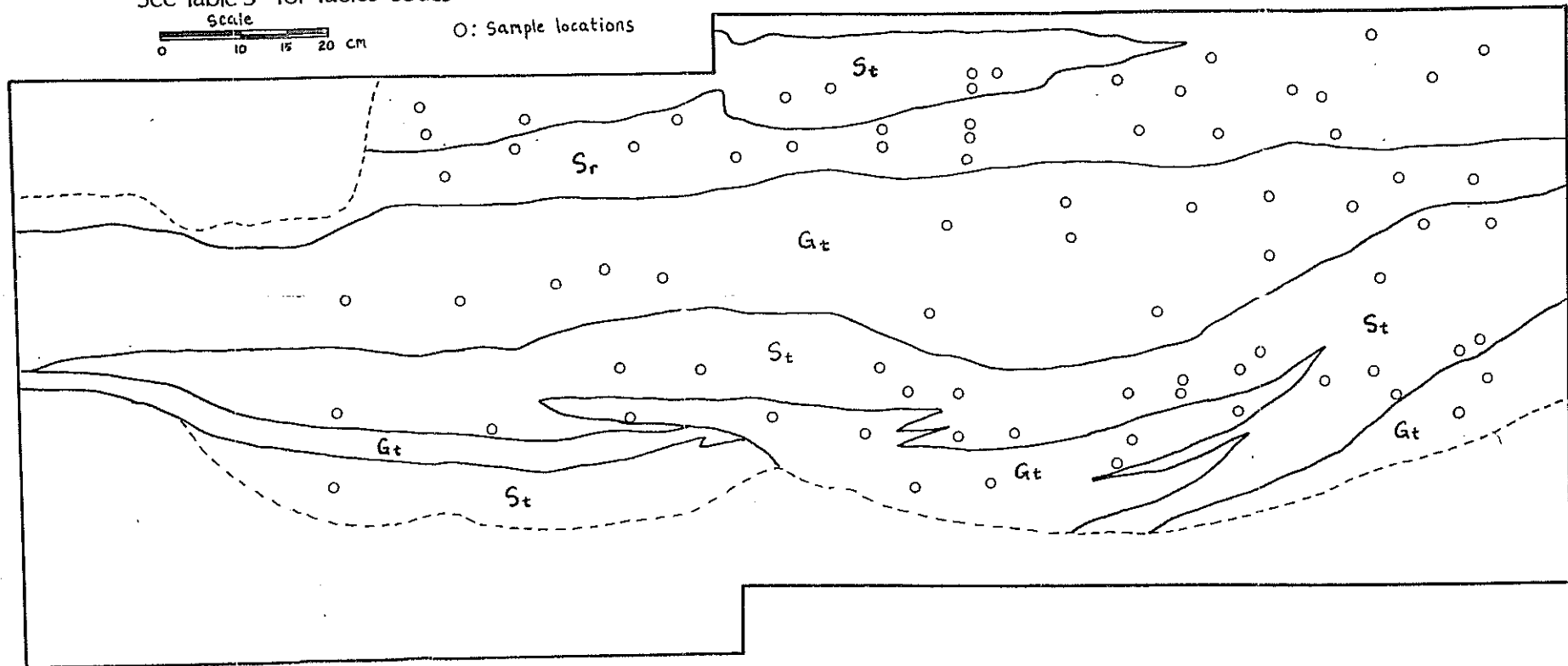
Facies Map of: PSI
PLATE 3

PLATE 4 Facies Map of: PS2

See Table 3 for facies codes

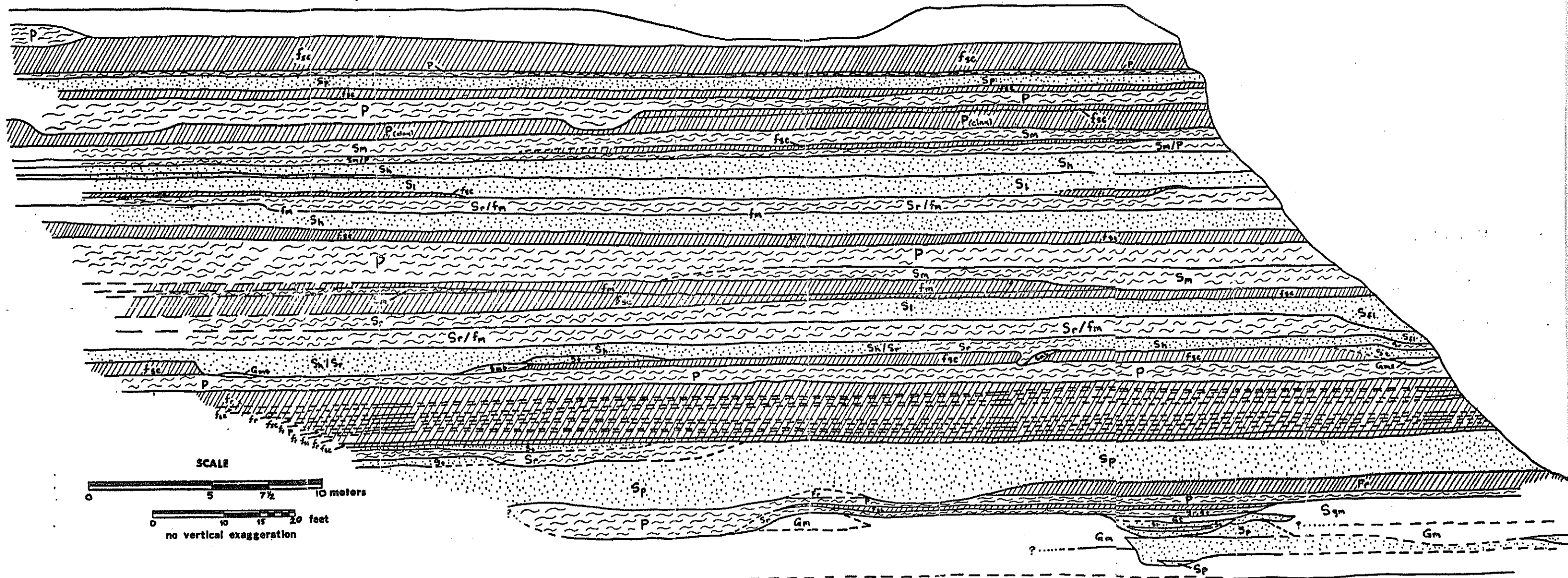


○: Sample locations



SW

NE



Facies Map of Outcrop-1
 (see Plate 1 for location)

PLATE 5

