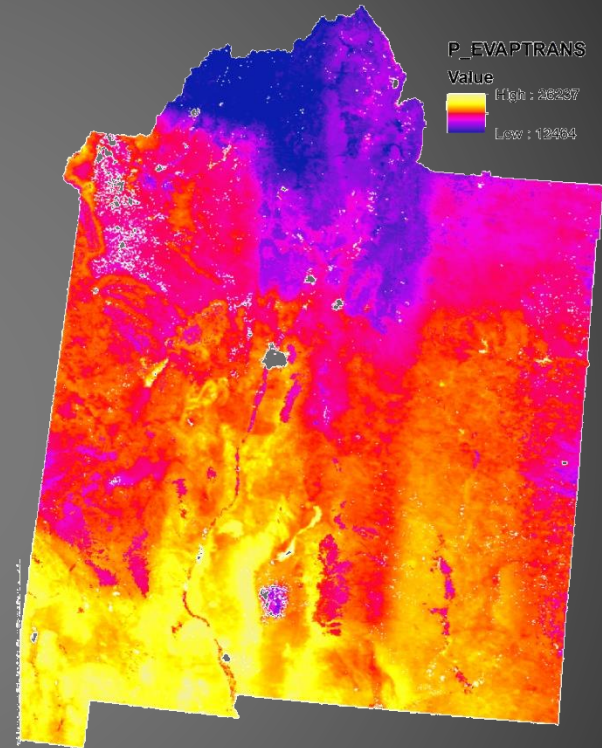
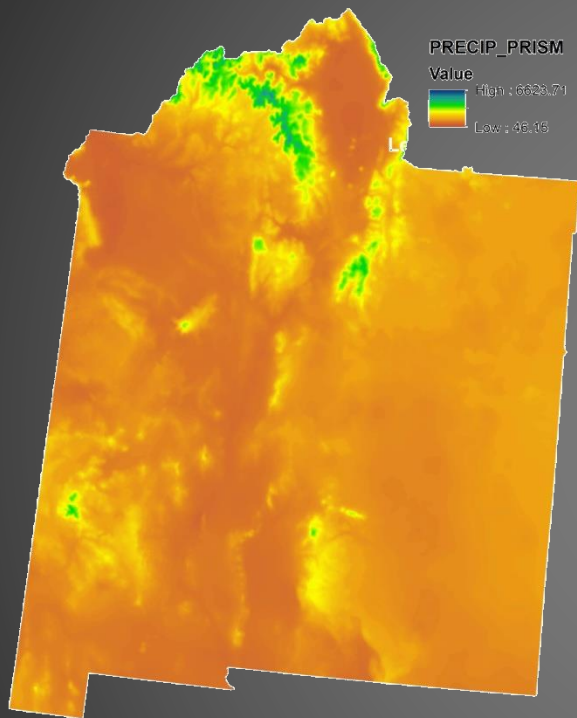


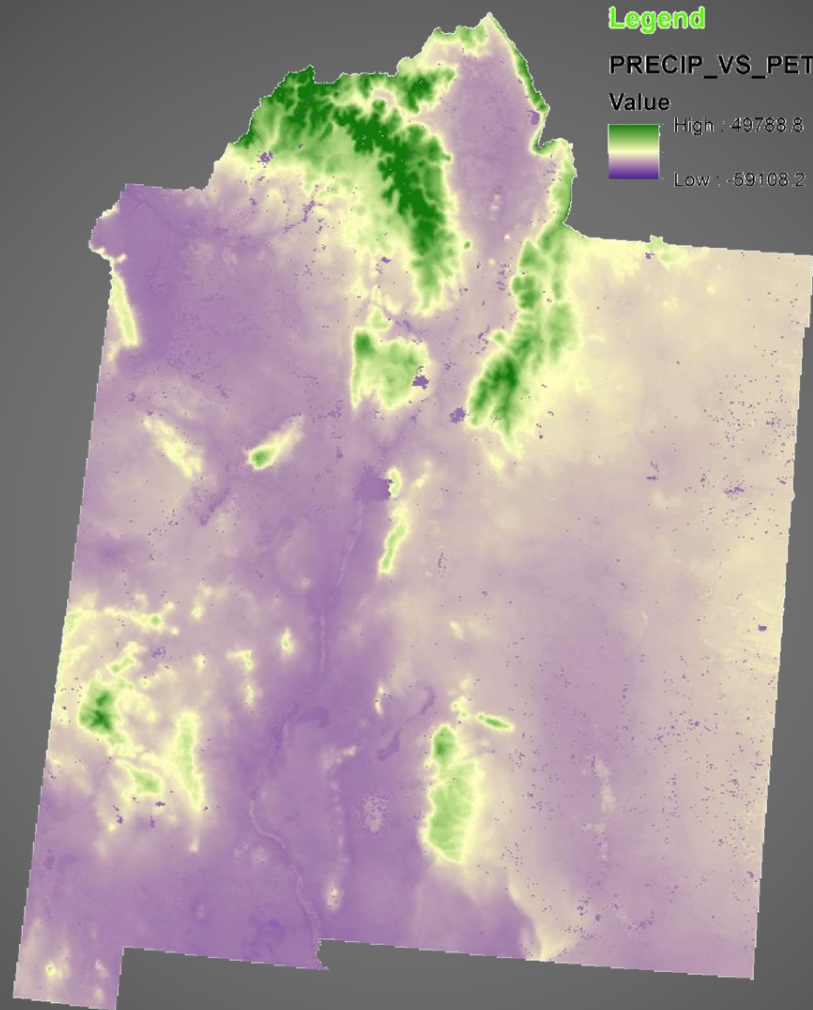
# Regional Scale Datasets to Use for Recharge Analysis



PRISM (Parameter-elevation Relationships on Independent Slopes Model) data is the official spatial climate data used by the USDA. This model shows precipitation.

MODIS data is collected from an orbiting satellite which passes over New Mexico every day. An algorithm (MOD16) models evapotranspiration based on the images it collects.

# Recharge Area Identification



New Mexico State Water Assessment headwaters mask showing areas of likely recharge. Dark green Indicates high precipitation and low potential evapotranspiration based on multiyear averages of PRISM and MODIS data.