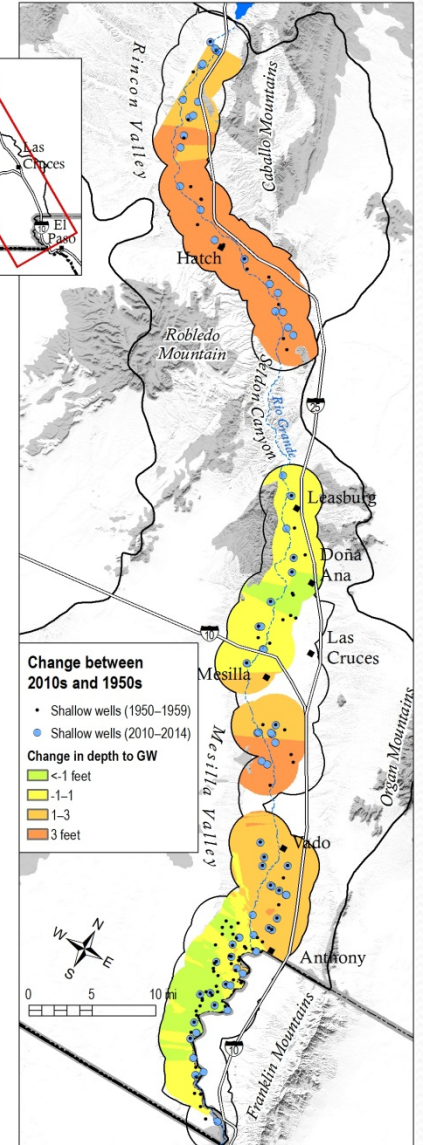
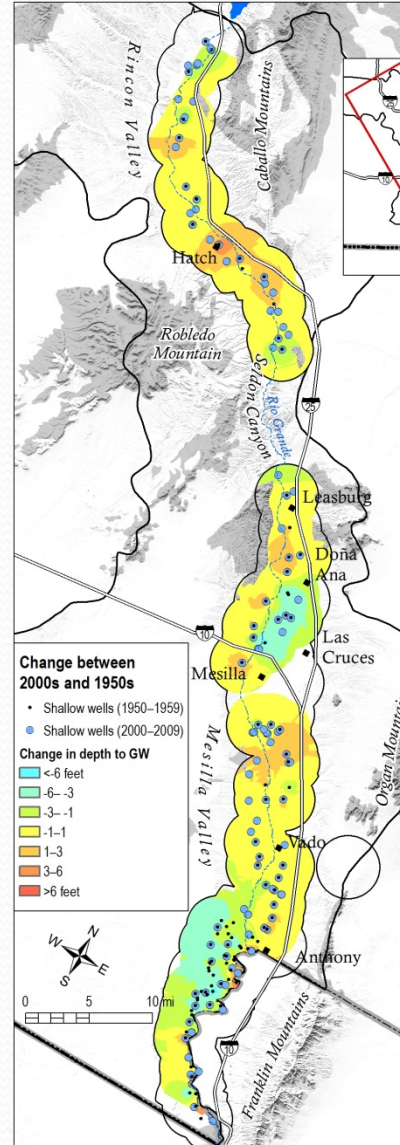
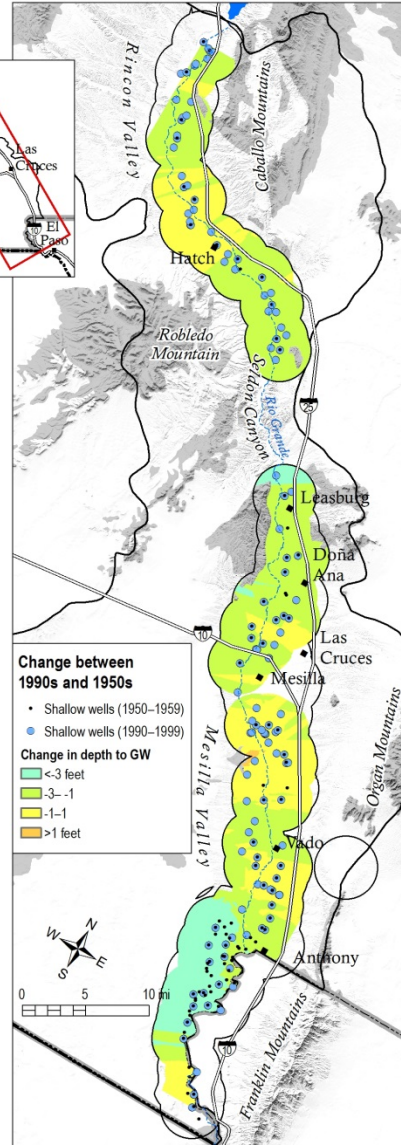
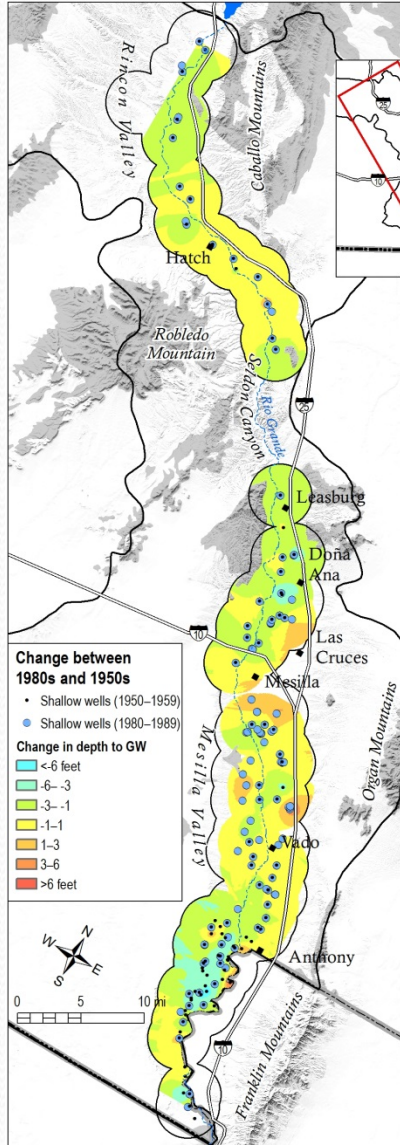


Statewide Water Level Change Analysis

Alex Rinehart, Brigitte Felix-Kludt, Ethan Mamer, Stacy Timmons
and Cathryn Pokorny. NM Bureau of Geology.

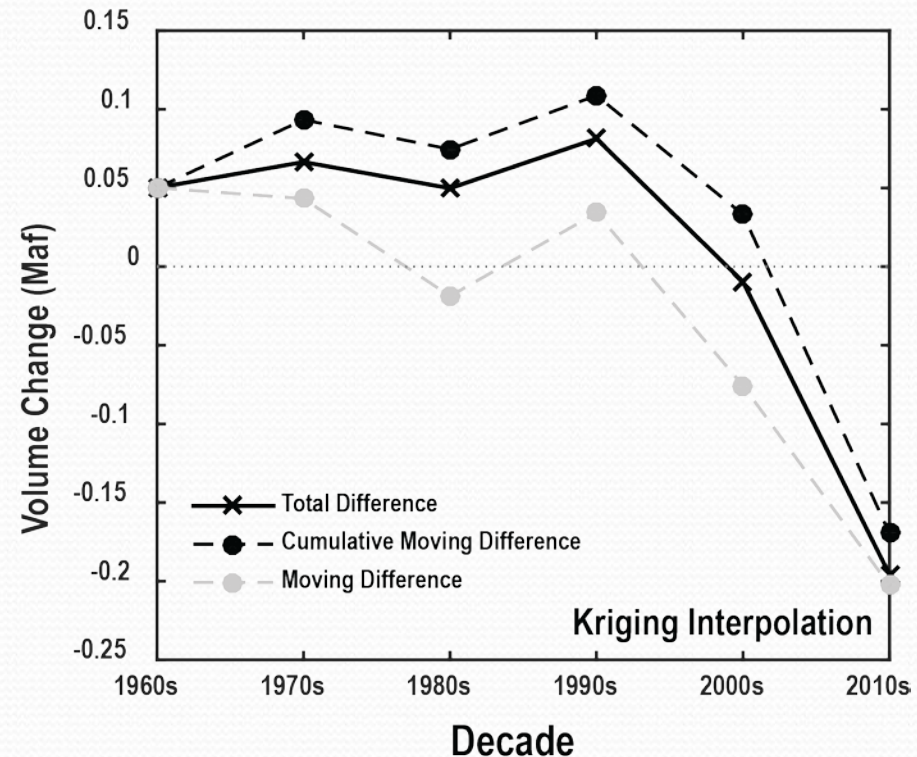
In collaboration with
Nathan Myers and Matt Ely (USGS), and Mike Johnson (NMOSE)
1 January 2015, Quarterly Report

Groundwater Storage Change in Mesilla and Rincon Basins



Groundwater Storage Change in Mesilla and Rincon Basins

- 'River' aquifer distinct from regional aquifer; we use a maximum depth-to-water (50 ft DTW) to separate.
- Deeper aquifer is not sampled densely enough (> 4 km spacing) to be statistically relevant.
- Relatively constant shallow water levels until last 2000s, where they drop sharply.
- Begun work on Elephant Butte, Albuquerque, and Santa Fe HUCs.



-
- Closed basin analysis complete for Eastern Estancia, Mimbres and Tularosa HUCs.
 - Playa Lakes and Jornada Draw HUCs are in progress.
 - Other closed HUCs in Rio Grande basins do not have necessary spatial coverage to reliably estimate groundwater storage change.