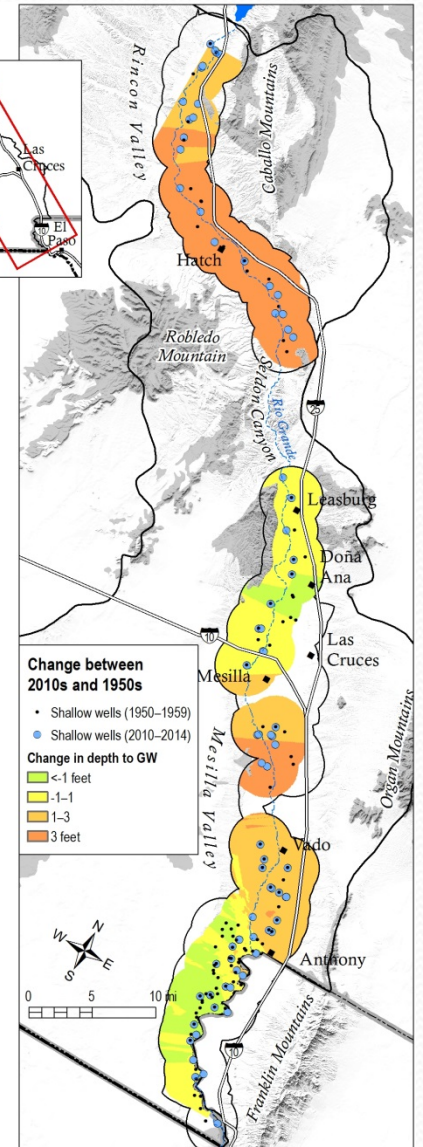
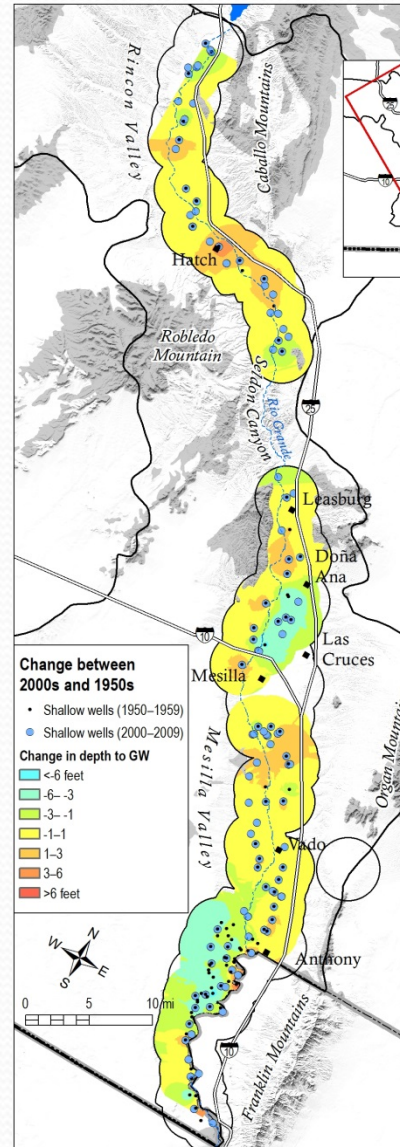
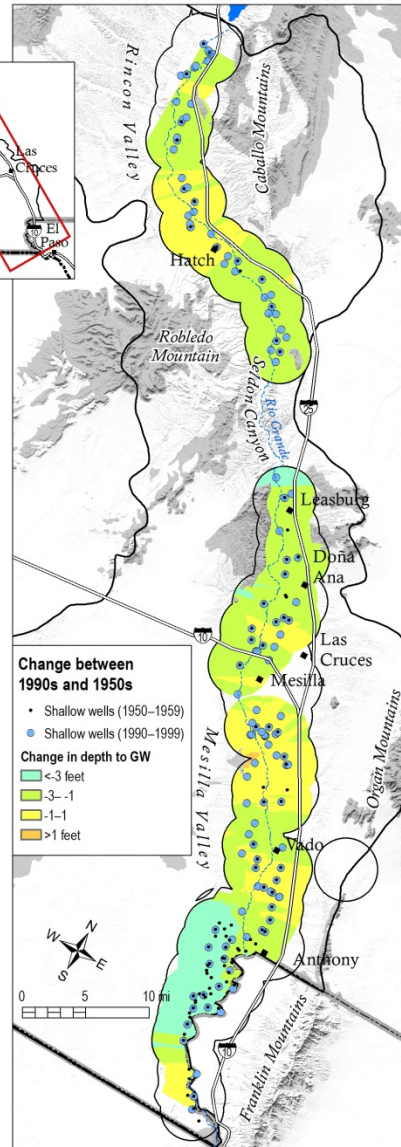
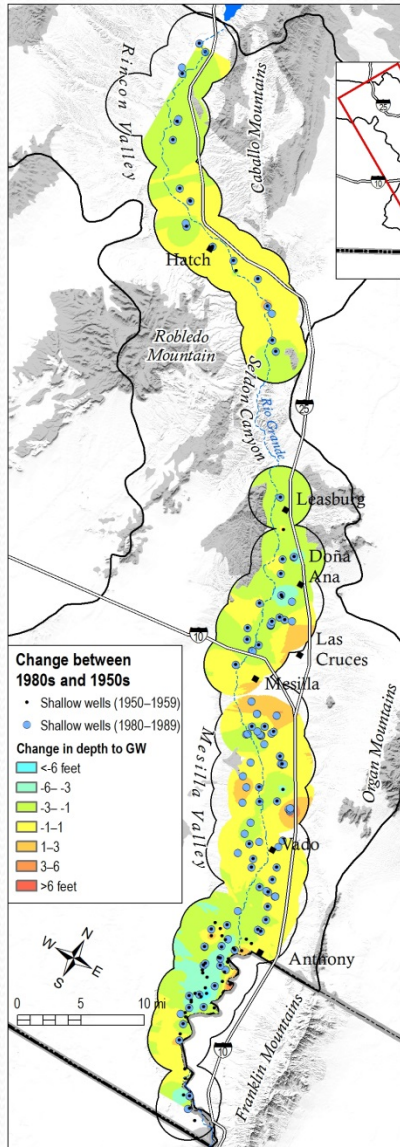


Statewide Water Level Change Analysis

Alex Rinehart, Brigitte Felix-Kludt, Ethan Mamer, Stacy Timmons
and Cathryn Pokorny. NM Bureau of Geology.

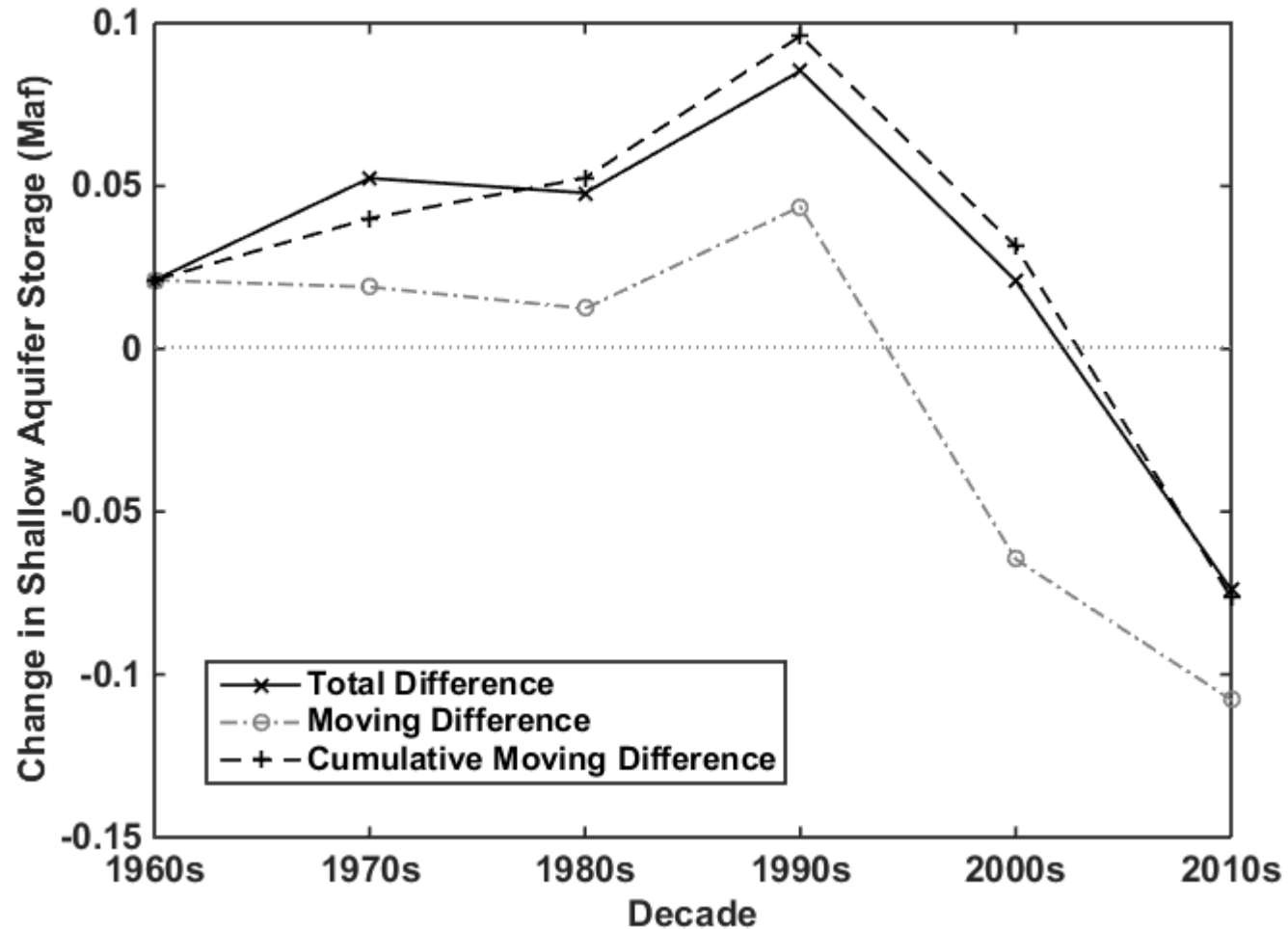
In collaboration with
Nathan Myers and Matt Ely (USGS), and Mike Johnson (NMOSE)
1 December 2015, Quarterly Report

Groundwater Storage Change in Mesilla and Rincon Basins



Groundwater Storage Change in Mesilla and Rincon Basins

- Sampling of deep wells not dense enough for storage change estimate.
- Small decreases until 2000s.
- Basin wide decreases 2000s through present, surpassing all gains by factor of 2.



Ethan Mamer is working on closed basins.