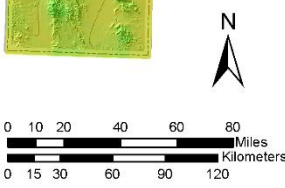
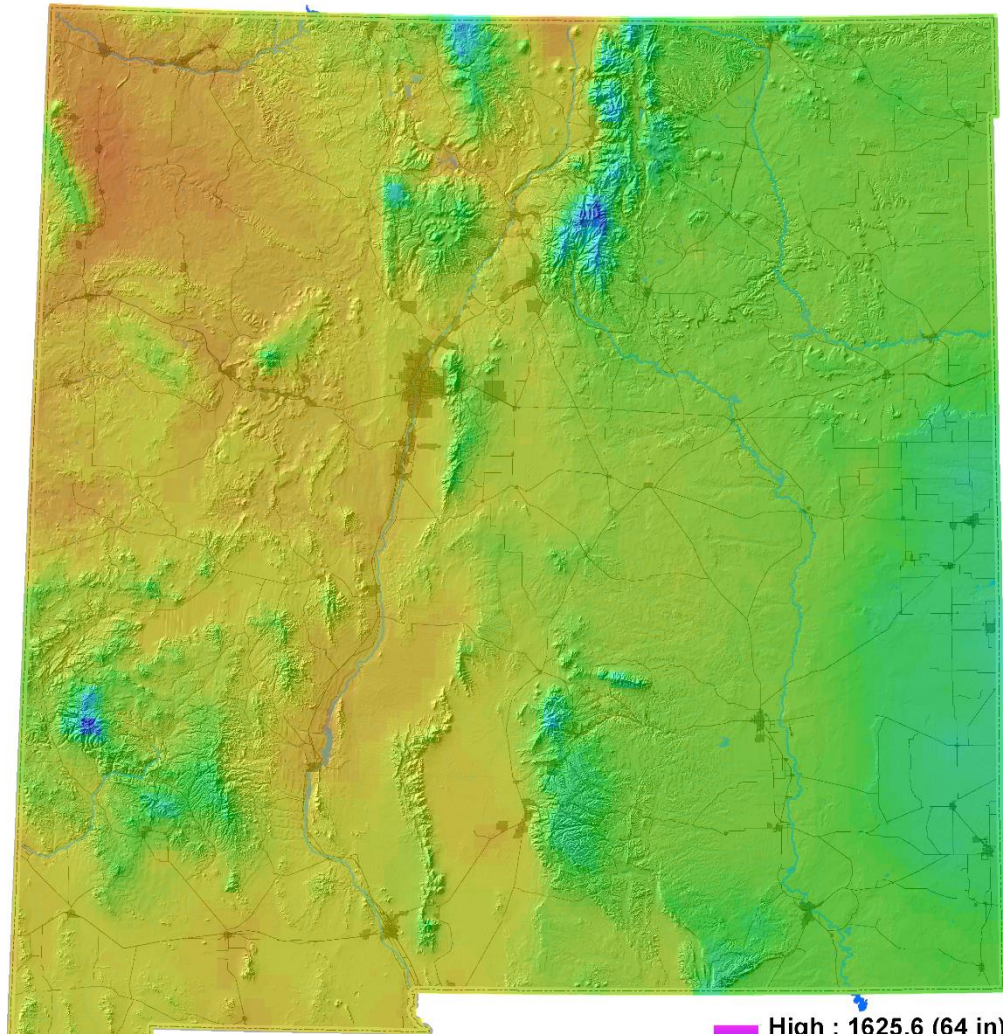
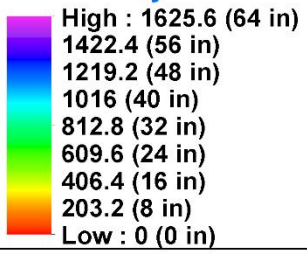


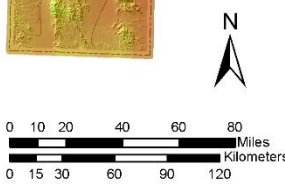
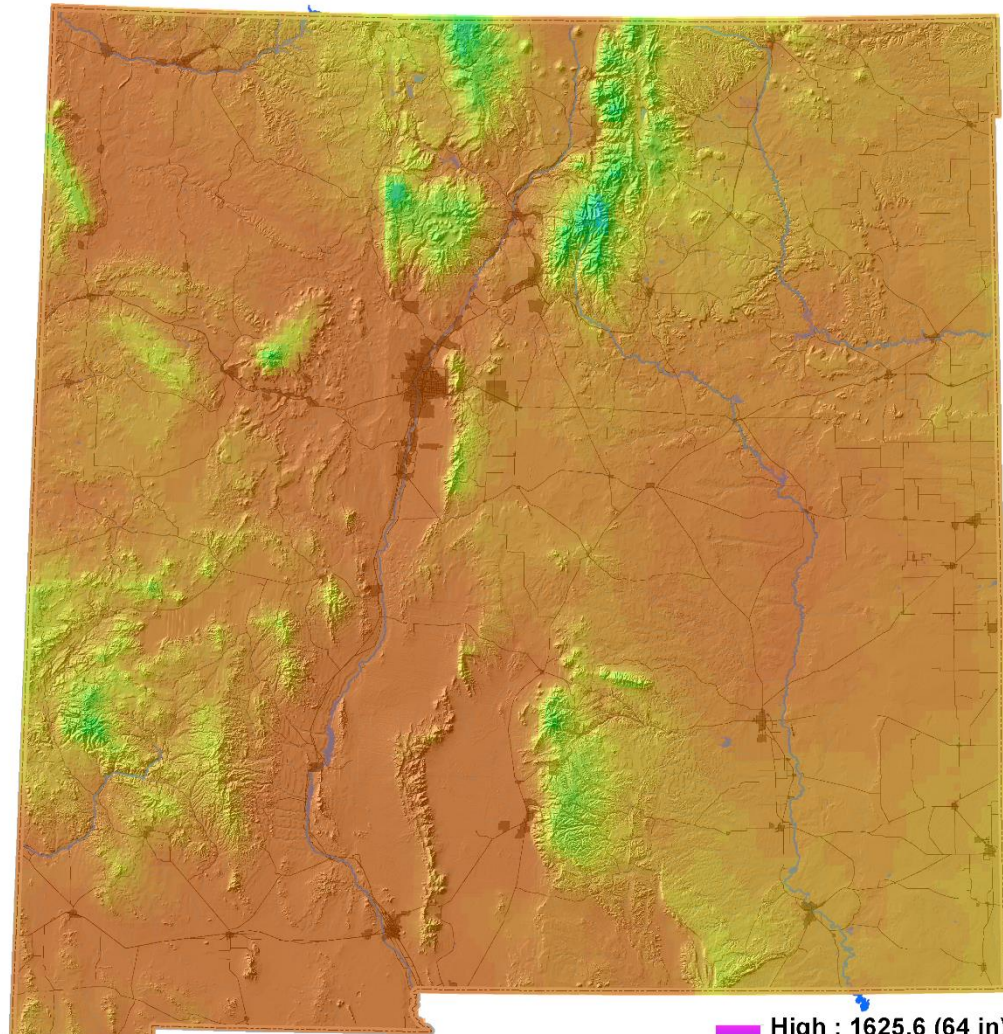
**Parameter-elevation Regression in Independent Slopes Model
[PRISM] Yearly New Mexico Precipitation for 2004 (wet year)**



Color ramp built using linear interpolation set between minimum and maximum values for all models spread over 64 individual units.



**Parameter-elevation Regression in Independent Slopes Model
[PRISM] Yearly New Mexico Precipitation for 2012 (dry year)**



Color ramp built using linear interpolation set between minimum and maximum values for all models spread over 64 individual units.

