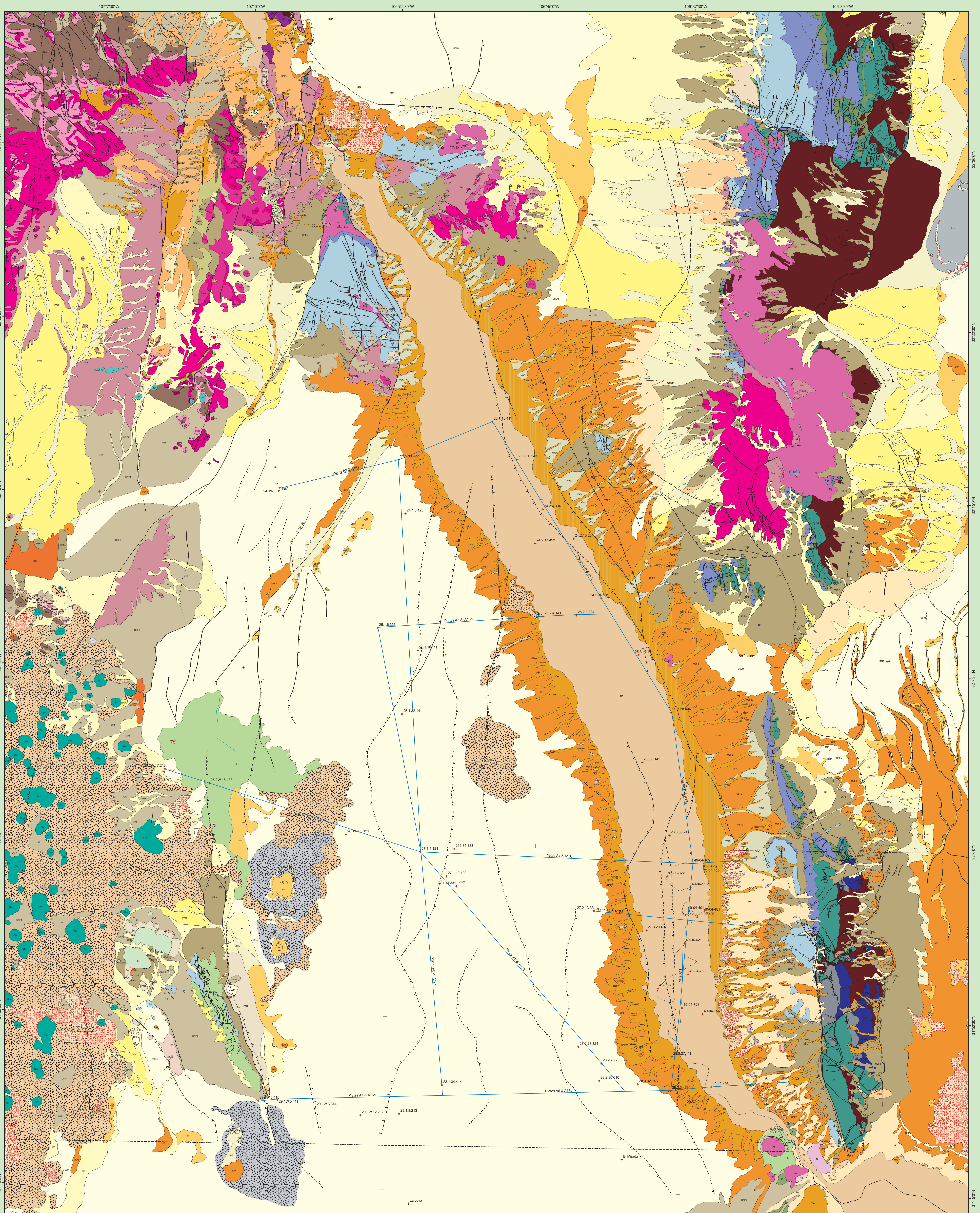
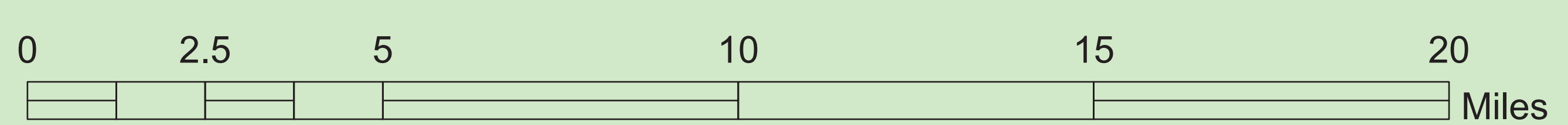


GEOLOGY OF SOUTH-CENTRAL NEW MEXICO



Legend

STRUCTURE	—▲— approximate thrust fault landslide	—●— line of craterlets
— — anticline	—○— crater	— — monocline	—○— approximate contact
— — approximate anticline	— — fault	— — normal fault	— — concealed contact
— — approximate fault	— — inferred fault	— — overturned syncline	— — contact
— — approximate normal fault	— — inferred normal fault	— — syncline	— — inferred contact
— — approximate normal fault	— — inferred syncline	—▲— thrust fault	
— — cross-section lines		BORDERS	
● well cores		— COUNTY	
		— INTERNATIONAL	
		— STATE	



1:100,000 1 inch equals 1.578283 miles